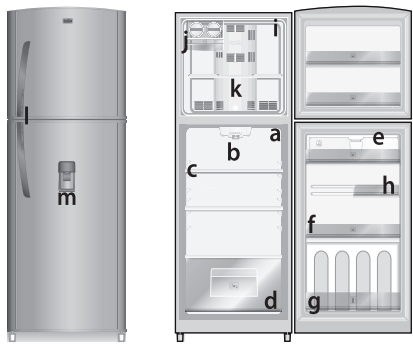


Owner's guide Automatic Refrigerators No/Frost

Models: **FF1414W, FF1426PL**

Diagram:

- Refrigerator compartment
- Temperature control box
- Tempered glass shelves
- Vegetable drawer
- Water tank
- Ultra-capacity door bin
- Bottle bin
- Door compartment bin
- Freezer compartment
- Easy Ice
- Air regulator system
- Handles
- Water dispenser



Read this guide carefully before installing or using your refrigerator.

Important: The images shown above correspond to more equipped refrigerators, if your refrigerator does not look exactly as shown, read the user's guide that corresponds to your model.

Made in Mexico by: MABE MÉXICO, S. de R.L. de C.V. Avenida 5 de Febrero No. 1325 Norte. Apdo. postal 262, C.P. 76120, Queretaro, Qro.

Minimum requirements for a proper electrical installation:

Observe the nominal characteristics that apply to the product according to your country of residence.

DANGER: Risk of child entrapment

Before you throw away your old refrigerator or freezer

- * Take off the doors.
- * Leave the shelves in place so that children may not easily climb inside.

Country	Nominal Characteristics
Mexico	115 V - 60 Hz
Brazil	127 V - 60Hz / 220 V - 60Hz
Europe	220 V - 240 V - 50 Hz
Middle East	220 V - 50 Hz / 110 V - 60 Hz
Peru	220 V - 60 Hz
Ecuador	115 V - 60 Hz
Venezuela	115 V - 60 Hz
Colombia	115 V - 60 Hz
Chile	220 V - 50 Hz
El Salvador	115 V - 60 Hz
Argentina	220 V - 50 Hz
Canada	115 V - 60 Hz
United States	115 V - 60 Hz
Puerto Rico	115 V - 60 Hz
Uruguay	220 V - 50 Hz

Before connecting your refrigerator

General instructions

Remove the bases, packaging and accessories. To remove the adhesive tape residue use a cloth soaked in water and neutral soap.

Placement

Select a wide area to locate the refrigerator. It must be kept clean and dry to avoid rust. To guarantee adequate air circulation, allow a distance of at least 0.1m (3.9 in) at the back of the refrigerator.

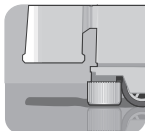
Do not place the refrigerator near heat sources like stoves, heaters, or in direct sunlight, as this will cause it to overwork and to be less efficient. To guarantee a correct functioning and to avoid disagreeable noises, do not lean the refrigerator against the wall.

Leveling

Use the two leveling screws to level the refrigerator. Insert and adjust screws so that they rest firmly on the floor.

Note:

The front of the refrigerator must be rested a little higher than the rear, placing the refrigerator slightly backwards. Two persons will be needed to level the refrigerator, one to tilt the unit back and another one to move the screws.



Installing your refrigerator

Before inserting the plug into the outlet, clean the interior of your refrigerator using a cloth or soft sponge and neutral soap, or a solution of baking soda.

Electrical installation

- Your refrigerator is provided with a polarized power cord Y-type and with a grounding cable integrated. Under no circumstances must grounding cable be removed to connect an adapter plug or cut to be replaced by a 2 prong plug.
- If your electrical installation is not equipped with this kind of outlet, obtain one, and have it installed by a qualified electrician. Failure to do so will result in full responsibility of the user in case of any personal injuries and/or material damage caused by the product.
- Connect your refrigerator to the closest outlet. We strongly recommend against the use of an extension cord.
- If possible, try not to connect another electrical appliance to the refrigerator outlet while in use. By doing so, you will avoid power surges and the overheating of your appliance.
- To connect and disconnect your refrigerator, grip the plug firmly, and pull straight from the outlet. Never pull the electrical cord.

If you live in an area where there are power surges, take the following precautions:

- Do not connect your refrigerator to the outlet.
- Install an exclusive automatic voltage regulator with minimum of 500 W - 10 A.
- Make sure that the regulator can withstand the power surges that occur in your area.
- Ask a qualified electrician to inspect the wall outlet and the electrical circuit, to ensure the circuit is properly grounded.
- To ground the circuit, follow the grounding regulations and call a qualified electrician.

To prevent risk of injury, damaged cords must be replaced by the manufacturer, an authorized service agent or a qualified electrician.

Important

Any personal or material risk resulting in the failure to consider the above mentioned recommendation will be the user's responsibility.

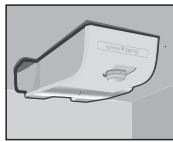
First connection

- Before connecting the refrigerator, turn the refrigerator temperature control to mid-position (between 4 and 6).
- Connect the plug to the wall outlet.
- Allow refrigerator to operate empty and with the doors closed for 4 hours before loading with food.
- Avoid opening the door so that it can reach the desired temperature.
- If you want to place your refrigerator in another location disconnect it before moving.
- Once it is in the desired location, repeat the above mentioned steps.

Refrigerator temperature control

The refrigerator temperature control knob is located inside the compartment, to regulate the temperature, turn knob to desired position.

Temperature	Use conditions
Minimum (1-3)	Few food items stored. Doors seldom opened.
Medium (4-6)	Normal use.
Maximum (7-9)	Many food items stored. Doors frequently opened.

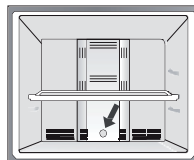


Note:

The interior temperature may vary depending on the ambient temperature. In the hot months (summer), the temperature control may need to be adjusted in order to lower the temperature and in the cold months (winter) temperature may need to be increased. It is not necessary to defrost your refrigerator as it defrosts automatically (No Frost).

Air regulator system

Your refrigerator is supplied with an additional control which regulates the cold air circulation and distribution between the fresh food compartment and the freezer compartment. It is factory calibrated for optimum operating so we recommend not altering its position.



If you wish to adjust it, use a coin in the central slot. By turning it to the left, an increased air flow will be generated to the freezer compartment and will accelerate freezing process. However, the freezer will take longer to reach the correct temperature.

If you turn it to the right, the air flow will be decreased to the cooling compartment, and freezing process will delay, according to the following:

Air Regulator Position			
Freezer compartment temperature	Less cold	Recommended	Colder
Refrigerator compartment temperature		It does not vary.	

Important
By altering the air regulator system, the refrigerator compartment temperature won't change but the time to reach the temperature will.

Note:
Do not overload the refrigerator with food, leave space between items and use the supplied grids used to support them to facilitate necessary air circulation and to prevent poor performance.

Warning

- *Do not touch the interior walls of freezer with wet hands.
- *Do not allow children to hang from the doors and/or play near the refrigerator when the door is open as they could get injured or trapped inside.

Water dispenser (Applies for some models)

See instructions in the top of the refrigerator door.

Note: The maximum level of water is indicated at 3.3L (111.6 oz.) Avoid over filling the container to prevent overflow of water.

Warning

The manufacturer is not responsible for the use of the container with another type of liquid other than natural water, as they may cause a malfunction in the system. Place the tank correctly to avoid dripping. If the water dispenser ceases to be used regularly, water may have a strange taste in subsequent uses. Do not remove any water dispenser parts, except the tank, the tank cover and the drop shelf collector. After dispatching water, the falling of some drops is normal. You can minimize this by slowly withdrawing the glass from the lever or actuator. In some cases due to a slight forming of condensation, it is also possible that some drops fall.

To remove drawer

Remove the drawer until the top, lift slightly to emerge from its riel and pull out.

To remove shelves

Remove all foods and objects placed on them. Place both hands on the front part of the shelf, With your fingertips, gently pull the shelf towards you, be careful to don't drop it, turn it slightly and pull down to remove it completely from the refrigerator. To replace, slide it onto the brackets and follow the above steps in reverse until it clicks into position.

Door Bins Ultracapacity bin - Bottle bin

To remove the bin take it by both ends and pull up to release it. To replace slides down the side guides and guarantee's to take out the lock.

Middle Bin

To remove the shelf hold and rotates upward to release it. To replace the upper hook inserted in the side, turn and push down until it enters the lower hook and hear "click".

Easy ice (Applies for some models)

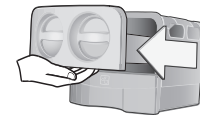
Some models have an Easy Ice System, located at the top left side inside the freezer compartment.

Warning Fill with potable water only.

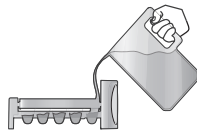
How to start using your Easy Ice:

Your system is divided in two, the cassette where the ice trays are, and the drawer where the ice is deposited once it is unmolded.

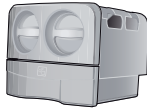
- To fill your ice trays with water you must place your thumb and your index finger between the system knobs and pull towards you until completely taking out the cassette.



- Once the cassette is out, place it on a flat surface and fill the trays with purified water. Avoid overfilling the trays or it will be more difficult to unmold the ice.

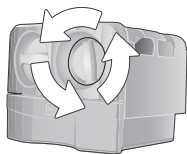


- Re-insert the cassette by aligning the cassette side rail on the support bracket and push until it is fully in place and carefully aligned horizontally to prevent dripping.



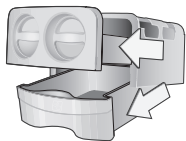
Unmolding

- After waiting some time, there will be ice cubes inside the grids; turn the knob in clockwise direction, until the ice cubes fall into the drawer below.
- The drawer can store up to 0.8 Kg (1.7 lb) of ice or 2 ice batches; to remove the ice simply lift and pull the bottom drawer. This drawer is designed to be carried wherever you wish.
- To make more ice cubes, repeat the process.



Cleaning the easy ice system

To clean the easy ice system is important, use only a soft sponge with mild soap and water then air dry. Do not use fibers or products such as dish or laundry detergents (especially on the ice systems), as this may damage its functionality. For easy cleaning, remove cassette by using your thumb and index finger between the knobs and pulling it towards you, until fully removed. Similarly, pull the drawer out of the system and take it where you want to clean it.



Recommendations of Preservation

- *We recommend storing food in containers with lids, wrapped in or stored in air tight materials such as aluminum foil or plastic wrap.
- *Do not store hot foods in the fresh food compartment or freezer. You must wait until they have cooled down to room temperature.
- *Always observe expiration date for frozen products.
- *Once food is thawed it may not be refrozen.
- *Soft drinks must not be placed in the freezer.

Cleaning your refrigerator

Always disconnect the refrigerator plug from the outlet before cleaning or starting a technical process. Never use toxic products (like ammonia, etc.), abrasive products (pastes) or fibers as they may damage the refrigerator.

- Use a soft sponge or a damp cloth with mild soap. Rinse and dry well with a clean, dry cloth.
- You can also use a solution of one spoon of baking soda and two liters of warm water to clean the interior.
- Do not use fibers or sharp or pointed objects which may scratch your refrigerator, grids or the interior shelves.
- To clean the condenser (on models that apply), use a brush, cloth or sponge to eliminate accumulated dust.
- Clean and wash your refrigerator at least every six months.

Replacing the light bulb

To replace the light bulb in your refrigerator, follow the instructions below:

- Disconnect your refrigerator.
- Remove the light bulb cover by pressing the rear cover inwards while moving the cover downwards from the upper part, once removed pull cover backwards.
- Remove the light bulb by turning it counter-clockwise.
- Replace light bulb with one of the same electrical characteristics (voltage and power) and dimensions as the previous one.
- Place the light bulb cover back by inserting the front flange to the control slot, and pushing the cover upper part upwards until it "clicks".

Trips and absences

With prolonged absences, disconnect the plug from the wall outlet.

- * Leave your refrigerator clean and empty, including the ice trays.
- * Leave the door ajar, placing an object behind it to prevent it from closing. This will prevent the concentration of bad odors.

For short periods of absence, your refrigerator may remain connected. But be aware that there is always the possibility of power outages while away.

Moving

If you need to place the refrigerator in a horizontal position in order to transport it, place it only on its left side (when viewing your refrigerator from the front). It is important before moving your refrigerator to insert the leveling screws as far as they will go.

Heating of zones near the freezer

Your refrigerator is equipped with a device that prevents condensation. The heating of some areas outside your refrigerator are normal. This is to prevent condensation of water droplets on the outside of your refrigerator. However, under high temperature and high humidity in the atmosphere, slight condensation may form. Dry with a soft cloth.

Normal operating sounds

Some sounds are normal when your refrigerator is operating.

- Crunching sound.** Is heard when ice breaks. It is the same noise heard when ice trays are removed from the freezer and exposed to room temperature.
- Compressor sound.** It is caused by the motor. It means the compressor is operating.
- Gas expansion sound.** It is the characteristic sound of gas expansion in the refrigeration system. It is similar to the sound heard when filling a gas cylinder.
- Defrosting sound.** It is the characteristic sound of running water. It occurs when the refrigerator is going through defrosting process.
- Ventilation system sound.** It is the characteristic sound of a fan which means the cooling system is operating.
- Bubbling water sound.** It is the characteristic sound of bubbling watering the defrosting system, which prevents heat from entering the unit.

Problems with electrical supply

The majority of power outages are corrected in a few hours. The interior temperature of your refrigerator will not be affected for up to 4 hours. However if the electrical failure persists for more than 6 hours we suggest you place ice bags into both compartments to help preserve foods.

Your refrigerator will not be affected in any way on the resumption of power.

Problem	Probable Cause	What to Do
Refrigerator is not working	*It has been installed in an unsuitable place. *The air circulation is obstructed. *Door is being left open for excessive time. *The control temperature has been incorrectly set. *Refrigerator is exposed to direct heat or sunlight.	*See installation instructions. *Don't allow air outlets to be obstructed. *Only open refrigerator door for necessary time. *See operating and user guide. *See installation instructions.
External Condensation	Elevated humidity in the atmosphere (higher than 75% RH).	*It is normal for atmospheric humidity to be higher than 75%
External Condensation near to the magnetic gasket	*The door is not closing correctly. *The adhesion of the gasket is poor.	*Check that there aren't any objects inside the door keeping it from closing. *Use the two leveling screws to level the refrigerator.
Internal Condensation	*The door of the refrigerator has left open for a period of time *Food uncovers or hot, and containers filled with liquids without a cover. *The adhesion of the gasket is poor.	*Open the door just when you need it. *You must pack all your food, don't put hot food inside, and avoid liquids without a cover. *Use the two leveling screws to level the refrigerator.
It has become difficult to open refrigerator doors.	*Vacuum is generated by opening and closing the FZ and FF doors at the same time.	*Wait some minutes to eliminate this condition. *Open the FZ door first and then the FF door.

IMPORTANT SAFEGUARDS

This unit is not designed to operate in enclosed spaces. When placing your unit, make sure you allow adequate airflow on all sides: at least 4" at both sides, at the rear and at the top. Be sure that airflow under the appliance is not blocked.

Read all instructions, both here and in the *Owner's Guide*, before using this appliance. When using this appliance, always exercise basic safety precautions, including the following:

1. Use this appliance only for its intended purpose, as described in the *Owner's Guide*.
2. This refrigerator must be properly installed in accordance with the installation instructions before it is used. See 'Electrical Installation' in the *Owner's Guide*.
3. Never unplug your refrigerator by pulling on the power cord. Always grasp the plug firmly and pull straight out from the outlet.
4. Repair or replace immediately all electrical service cords that have become frayed or otherwise damaged. Do not use a cord that shows cracks or abrasion damage along its length or at the plug or connector end.
5. Unplug your refrigerator before cleaning or making any repairs.
NOTE: If for any reason this product requires service, we strongly recommend that a certified technician perform the service.
6. Do not use any electrical device or any sharp instrument in defrosting your refrigerator.
7. If your old refrigerator is not being used, we recommend that you remove the doors and leave the shelves in place. This will reduce the possibility of danger to children.
8. After your refrigerator is in operation, do not touch the cold surfaces in the freezer compartment, particularly when hands are damp or wet. Skin may adhere to these extremely cold surfaces.
9. Do not refreeze foods which have been thawed completely. The United States Department of Agriculture in *Home and Garden Bulletin No. 69* reads: "...You may safely refreeze frozen foods that have thawed if they still contain ice crystals or if they are still cold – below 40°F".

"...Thawed ground meats, poultry or fish that have any off-odor or off-color should not be refrozen and should not be eaten. Thawed ice cream should be discarded. If the odor or color of any food is poor or questionable, discard it. The food may be dangerous to eat."

"...Even partial thawing and re-freezing reduce the eating quality of foods, particularly fruits, vegetables and prepared foods. The eating quality of red meats is affected less than that of many other foods. Use refrozen foods as soon as possible, to save as much of their eating quality as you can."
10. This refrigerator should not be recessed or built into an enclosed cabinet. It is designed for freestanding installation only.
11. Do not operate your refrigerator in the presence of explosive fumes.

DANGER!

Risk of child entrapment! Before you throw away your old refrigerator or freezer, take off the doors. Leave the shelves in place so that children may not easily climb inside.

***SAVE THESE INSTRUCTIONS
for future use.***

LIMITED WARRANTY

ONE-YEAR LIMITED WARRANTY

Within the 48 contiguous United States, for one year from the date of purchase, when this appliance is operated and maintained according to instructions attached to or furnished with the product, warrantor will pay for factory-specified parts and repair labor to correct defects in materials or workmanship. Service must be provided by a designated service company. Outside the 48 states, all parts are warranted for one year from manufacturing defects. Plastic parts, shelves and cabinets are warranted to be manufactured to commercially acceptable standards, and are not covered from damage during handling or breakage.

5-YEAR COMPRESSOR WARRANTY

1. The compressor is covered for 5 years.
2. Replacement does not include labor.

ITEMS WARRANTOR WILL NOT PAY FOR:

1. Service calls to correct the installation of your appliance, to instruct you how to use your appliance, to replace or repair fuses or to correct wiring or plumbing.
2. Service calls to repair or replace appliance light bulbs or broken shelves. Consumable parts (such as filters) are excluded from warranty coverage.
3. Damage resulting from accident, alteration, misuse, abuse, fire, flood, acts of God, improper installation, installation not in accordance with electrical or plumbing codes, or use of products not approved by warrantor.
4. Replacement parts or repair labor costs for units operated outside the United States.
5. Repairs to parts or systems resulting from unauthorized modifications made to the appliance.
6. Expenses for travel and transportation for product service in remote locations.
7. The removal and reinstallation of your appliance if it is installed in an inaccessible location or is not installed in accordance with published installation instructions.

DISCLAIMER OF IMPLIED WARRANTIES - LIMITATION OF REMEDIES

CUSTOMER'S SOLE AND EXCLUSIVE REMEDY UNDER THIS LIMITED WARRANTY SHALL BE PRODUCT REPAIR AS PROVIDED HEREIN. IMPLIED WARRANTIES, INCLUDING WARRANTIES OF MERCHANTABILITY OR FITNESS FOR A PARTICULAR PURPOSE, ARE LIMITED TO ONE YEAR. WARRANTOR SHALL NOT BE LIABLE FOR INCIDENTAL OR CONSEQUENTIAL DAMAGES. SOME STATES DO NOT ALLOW THE EXCLUSION OR LIMITATION OF INCIDENTAL OR CONSEQUENTIAL DAMAGES, OR LIMITATIONS ON THE DURATION OF IMPLIED WARRANTIES OF MERCHANTABILITY OR FITNESS, SO THESE EXCLUSIONS OR LIMITATIONS MAY NOT APPLY TO YOU. THIS WARRANTY GIVES YOU SPECIFIC LEGAL RIGHTS AND YOU MAY ALSO HAVE OTHER RIGHTS, WHICH VARY FROM STATE TO STATE.

WARNING! This product may contain chemicals known to the state of California to cause cancer or birth defects or other reproductive harm. For more information, visit: www.summitappliance.com/prop65

Chemicals known by the manufacturer to be present in this product in concentrations higher than threshold limits: NONE.

FELIX STORCH, INC.
770 Garrison Avenue
Bronx, NY 10474
Phone: (718) 893-3900
Fax: (718) 842-3093
www.summitappliance.com

The logo for Summit Appliance, featuring the word "SUMMIT" in a bold, blocky, sans-serif font. The letters are black and have a slightly distressed or textured appearance.

For parts and accessory ordering,
troubleshooting and helpful hints, visit:
www.summitappliance.com/support