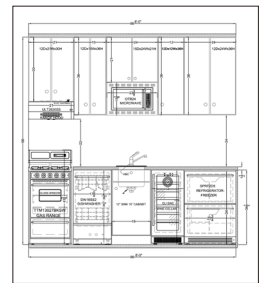
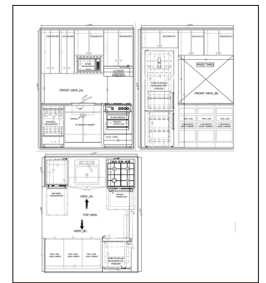
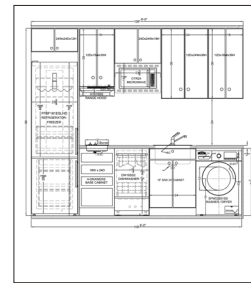
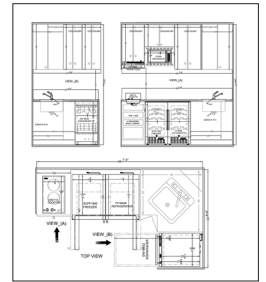
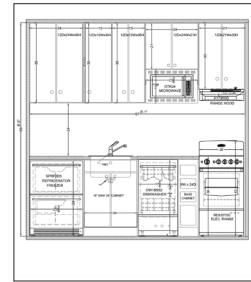




Small Kitchen Design Book

Designed by Summit, the
Appliance Industry's Answer
to Space-Challenged Kitchens



Summit Appliance Division, Felix Storch, Inc. ISO 9001:2015 CERTIFIED

Small Kitchen Design Book

Small Kitchen Layouts Starting With 8' of Wall Space

The Appliance Industry's Answer to Space-Challenged Kitchens

Designing a micro-apartment or tiny home has its challenges, but furnishing it with a full service kitchen doesn't have to be one of them. Summit's line of slim-fitting refrigeration, cooking, and cleaning appliances lets you provide your clients with the full convenience of a standard kitchen in less than half the size.

To demonstrate just how big a small kitchen can feel with the right appliance choices, we've put together these kitchen designs using our signature collection. You probably have even better ideas about how to make the best use of kitchen space, but if you'd like to learn more, we encourage you to visit us online or call our product specialists to learn what Summit can do for you. Whether you're designing a tiny home, ADU, studio apartment, temporary lodging, or any other small kitchen, we truly believe that with the right appliances, even the smallest space will feel like home.

About Us

Since 1969, Felix Storch, Inc. has specialized in bringing quality appliances to small kitchen spaces through its Summit Appliance division. Today, we are ISO 9001:2015 qualified, manufacturing and distributing a variety of products throughout North America. We offer a unique range of specialty appliances for smaller kitchen spaces, including the industry's largest selection of built-in undercounter refrigeration. Learn more at summitappliance.com

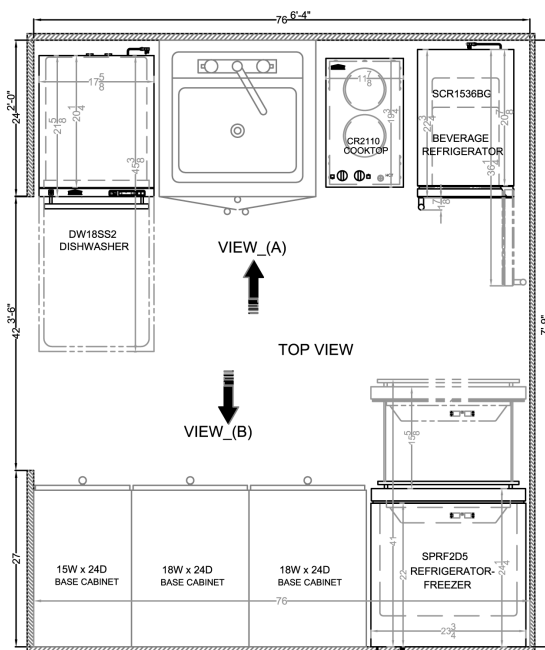
Table of Contents

Kitchen Designs

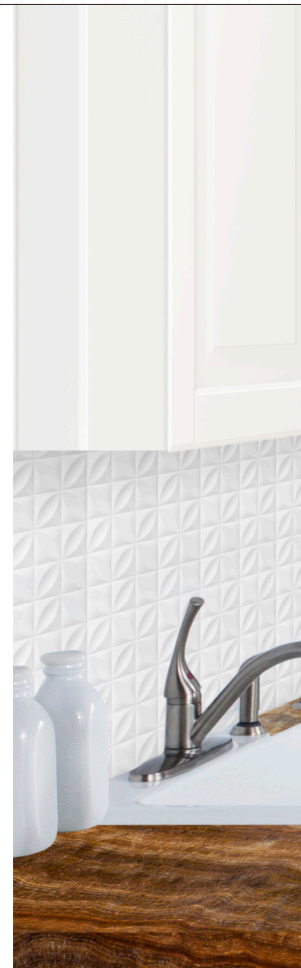
8' One-Wall Kitchen	p. 4
9' One-Wall Kitchen Variation	p. 6
8'1 One-Wall Kitchen	p. 8
6'3 x 7'9 Galley Kitchen	p. 10
6'3 x 7'9 Galley Kitchen	p. 12
6'4 x 7'9 Galley Kitchen	p. 14
4'4 x 7'4 L-Shaped Kitchen	p. 16
6'9 x 6'6 L-Shaped Kitchen	p. 18

Appliance Directory

Refrigerator-Freezers – Full-Sized	p. 20
Laundry & Dishwashers	p. 21
Electric & Induction Ranges	p. 22
Gas Ranges	p. 23
Electric & Gas Wall Ovens	p. 24
Microwaves & Speed Ovens	p. 25
Induction Cooktops	p. 26
Coil, Radiant, & Solid Disk Cooktops	p. 27
Gas Cooktops	p. 28
Range Hoods	p. 29
Built-In Undercounter Refrigeration, Wine, & Beverage ...	p. 30



See more of this kitchen on page 15





Access our
products in the
2020 Cloud



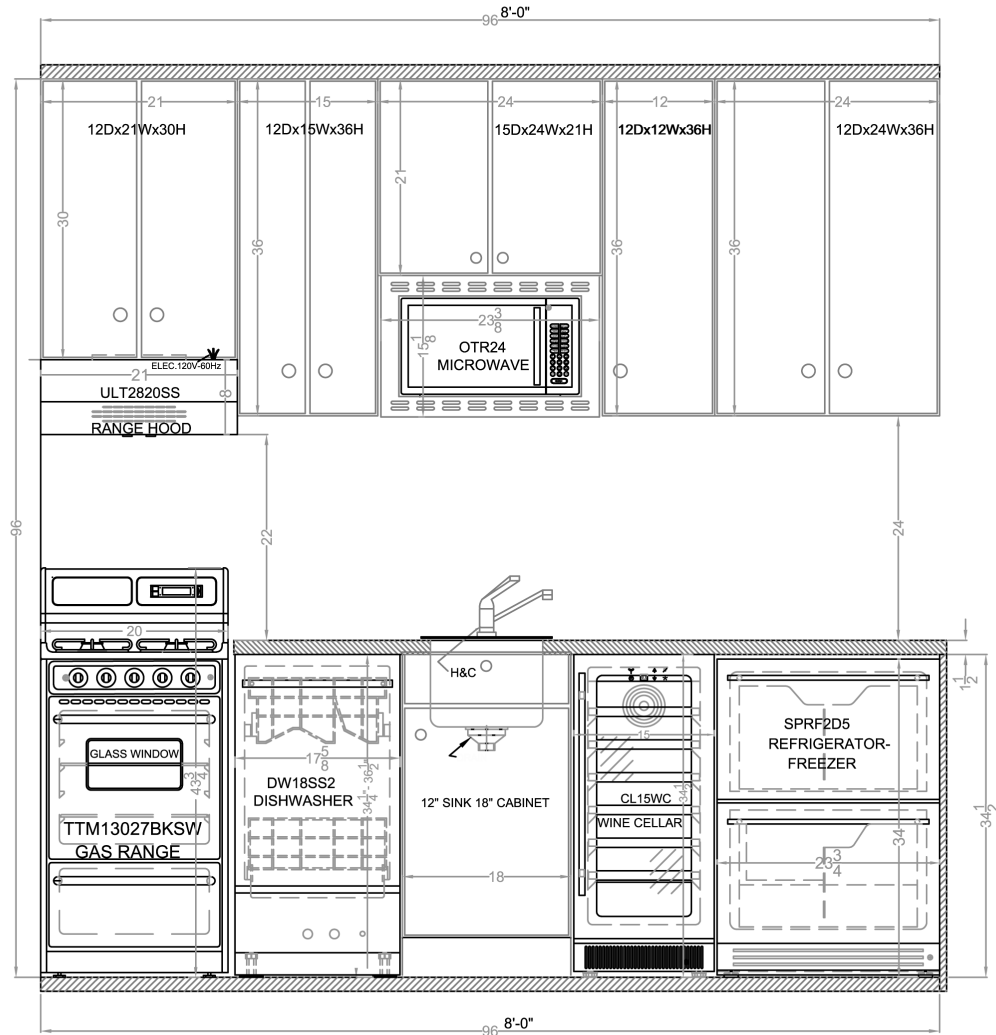


8' One-Wall Kitchen



Design# KITC16205

A traditional one-wall kitchen offers plenty of opportunity for full functionality, with a wine cellar and dishwasher included. Depending on your setup, find the perfect gas or electric range in a slim 20" fit.



Drawings available in PDF or AutoCAD at www.summitappliance.com/smallkitchenplans

The Tiny Kitchen MVP • 20" Ranges

When every inch counts, there's no reason to waste ten! Standard gas and electric ranges come in a 30" width, but Summit offers plenty of 20" wide choices that maintain all the same features you need in a slimmer footprint. These stoves offer the same cooking capabilities as larger ranges, with only a minor reduction in oven capacity. Perfect that turkey or host a small dinner party while freeing up convenient counter space.



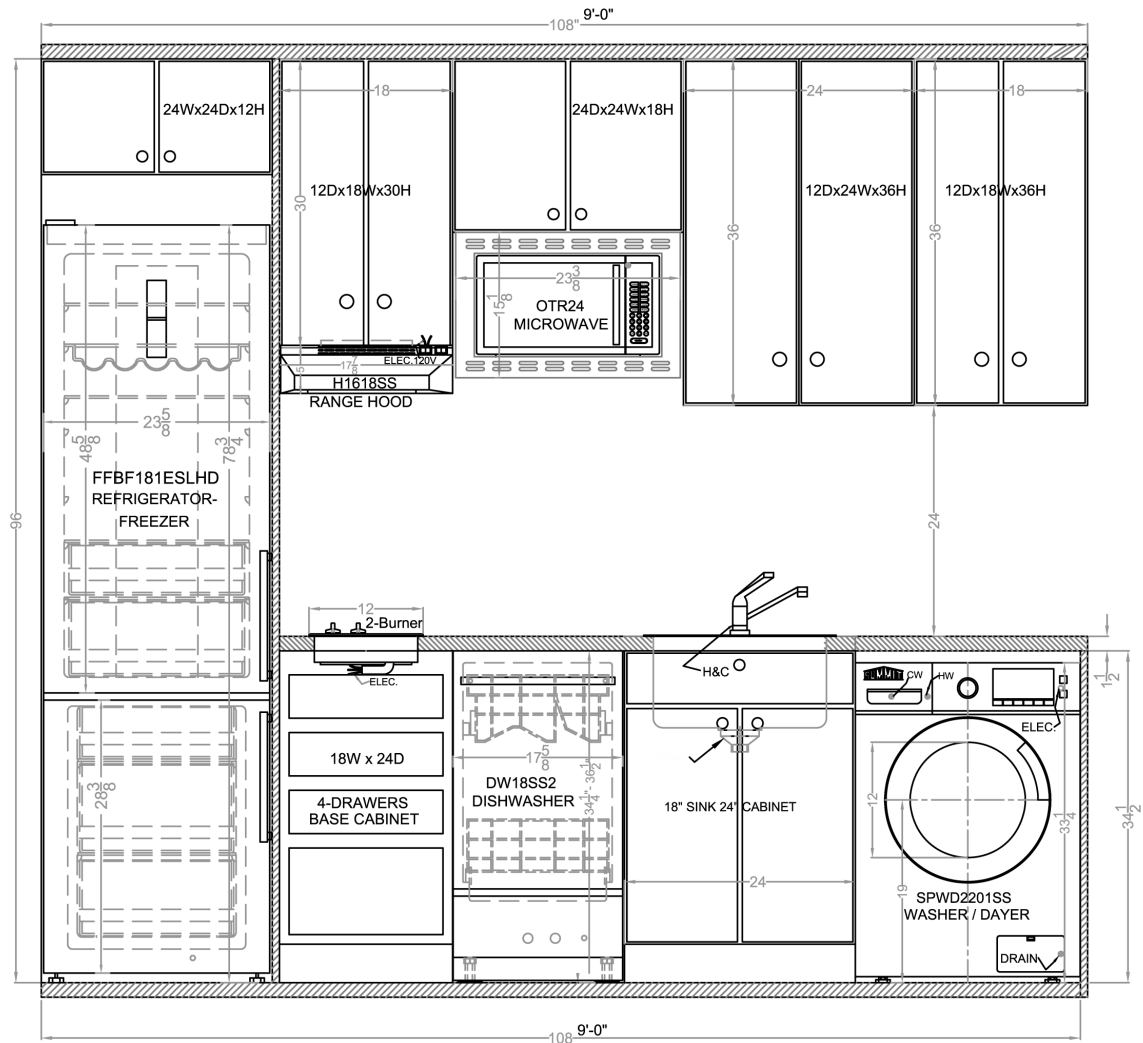


9' One-Wall Kitchen



Design# KITC16230

With just 9 feet of kitchen space, you can create a full-sized feel by choosing slim but tall refrigerators to keep the capacity residents have come to expect from more traditionally sized kitchens.



Drawings available in PDF or AutoCAD at www.summitappliance.com/smallkitchenplans



Complete Cooking Convenience In 24" • European Speed Ovens

Meet the modern home cook's favorite new appliance and a small kitchen designer's secret weapon: the speed oven. This built-in unit combines the features of a microwave, broiler, and oven, along with a convection function, all in a sleek European design with digital controls and a stainless steel finish. Build it in above or below the cabinetry.

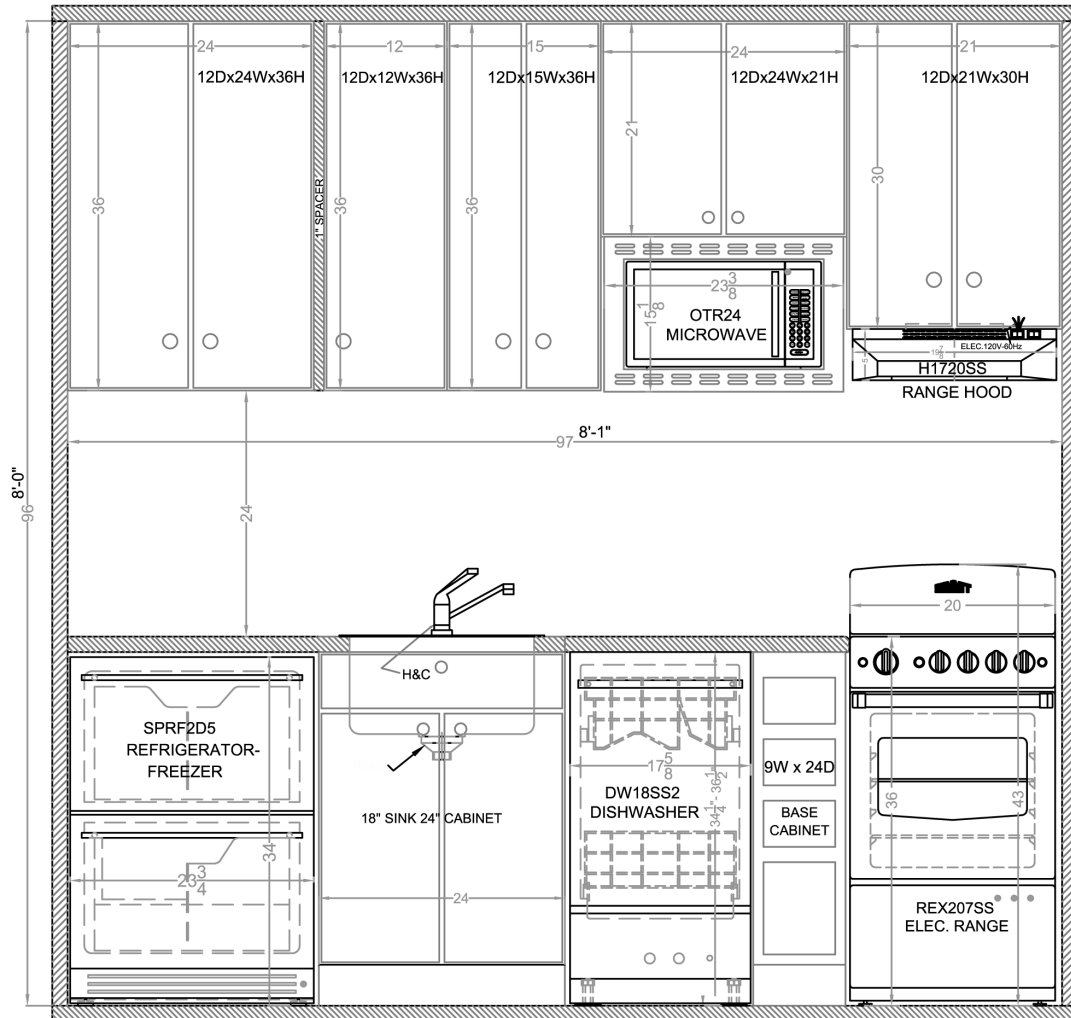


8'1 One-Wall Kitchen



Design# KITC16215

Simple but functional, our 8'1 kitchen includes all the key appliances you need with modern twists, such as a drawer unit with a separate refrigerator and freezer compartment.



Drawings available in PDF or AutoCAD at www.summitappliance.com/smallkitchenplans

Modern Style With Added Space Savings • Drawer Refrigeration

Rounded doors and heavy duty handles on standard full-sized refrigerators look great from the front, but when you open the door in a small kitchen, those little extras can take up a lot of space. With a more luxurious look and smarter design, undercounter drawer refrigerators and freezers offer a smart alternative that won't require any added width while providing just the right capacity for your weekly groceries.



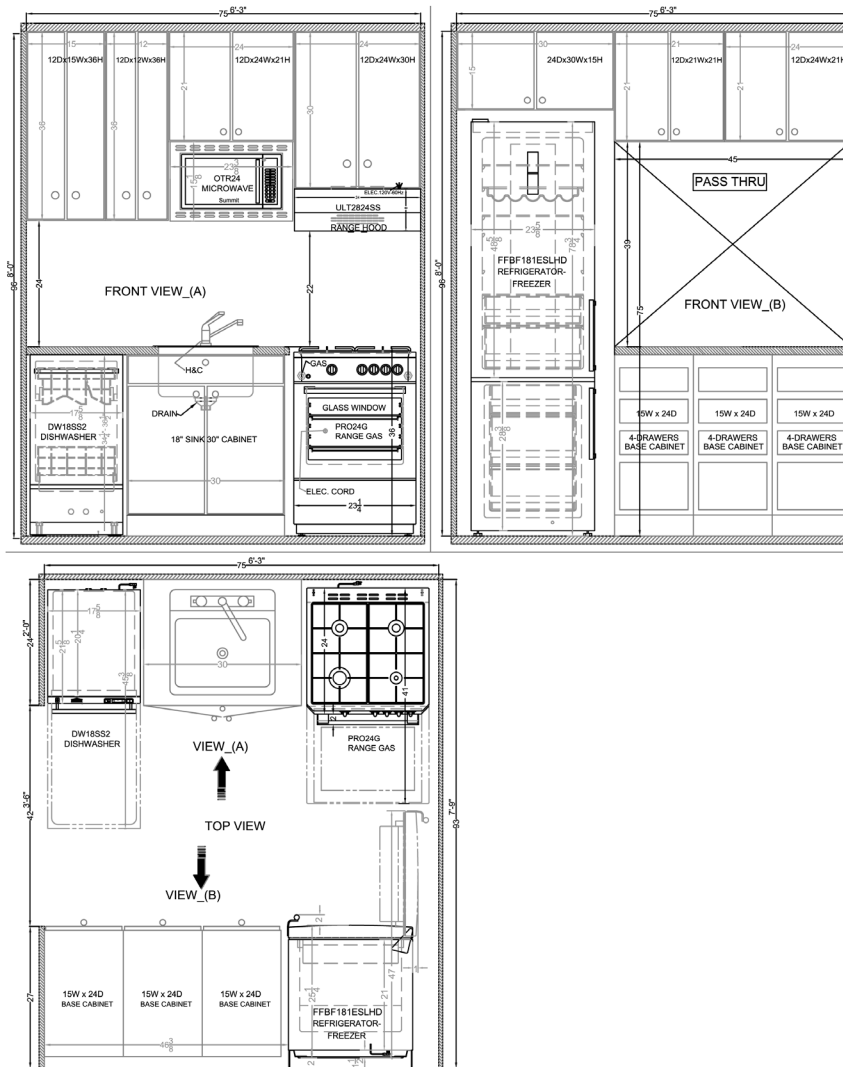


6'3" x 7'9" Galley Kitchen



Design# KITC16620

Look at all that counter space! By moving the microwave above the counter and saving room with a slim refrigerator, you can provide a larger working area for meal preparation.



Drawings available in PDF or AutoCAD at www.summitappliance.com/smallkitchenplans

Complete the Package • 18" Dishwashers

It might seem like a luxury, but every home cook appreciates a dishwasher. At just 18" wide, our slim line model is a simple step to making a tiny kitchen feel truly complete. Our 18" dishwashers easily hold 8 place settings which should provide more than enough room for any dinner party held in a home of this size.



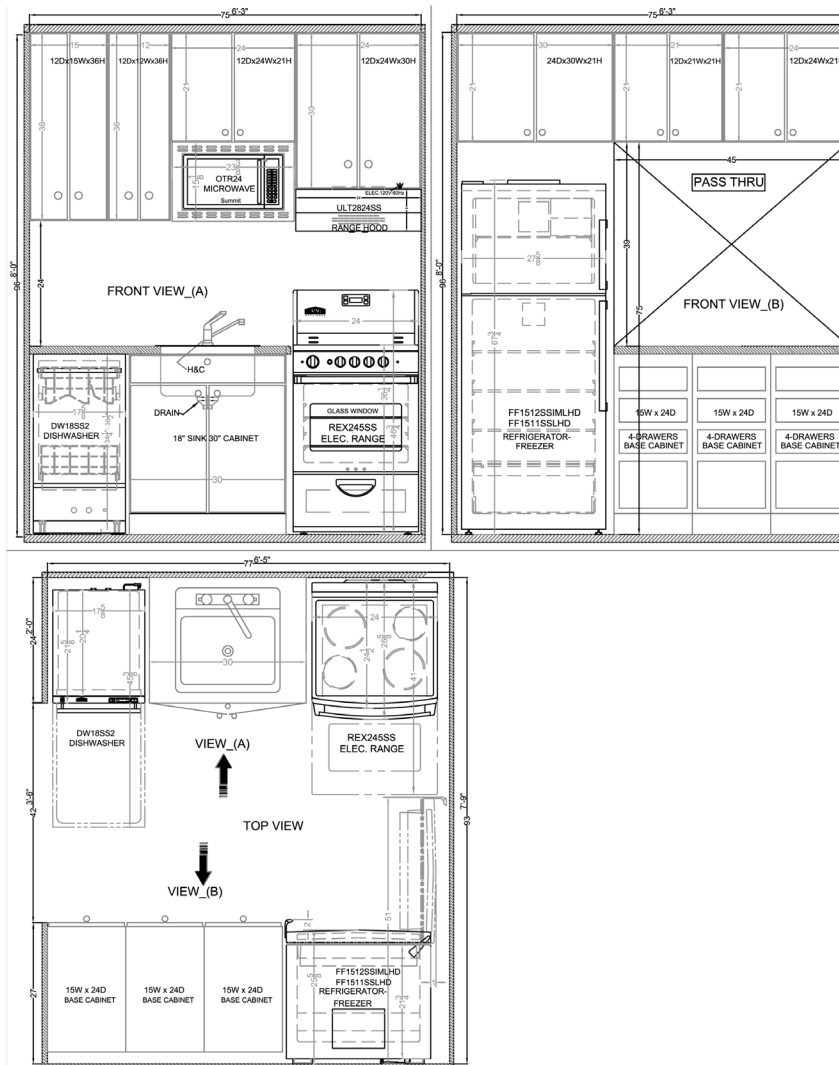


6'3 x 7'9 Galley Kitchen

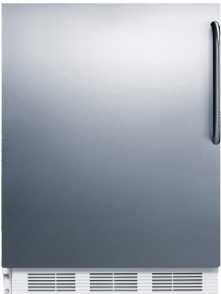


Design# KITC16610

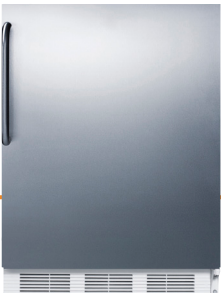
This slight adjustment to our previous design demonstrates how to use the same space with different refrigerator and stove configurations. The possibilities are endless!



LHD Swing



RHD Swing



Drawings available in PDF or AutoCAD at www.summitappliance.com/smallkitchenplans

No Room For Error: LHD vs RHD

When ordering your refrigerator, always make sure to confirm the direction of the door swing. Most units ship with a standard right hand door. While many units are designed to be user-reversible, some models may only be changed at the factory level due to the handle configuration, digital control setup, or other factors. Summit can almost always accommodate your needs when ordered correctly. Nobody wants to fight with their refrigerator door on a daily basis, but in a micro-kitchen, it can be an unwinnable battle.

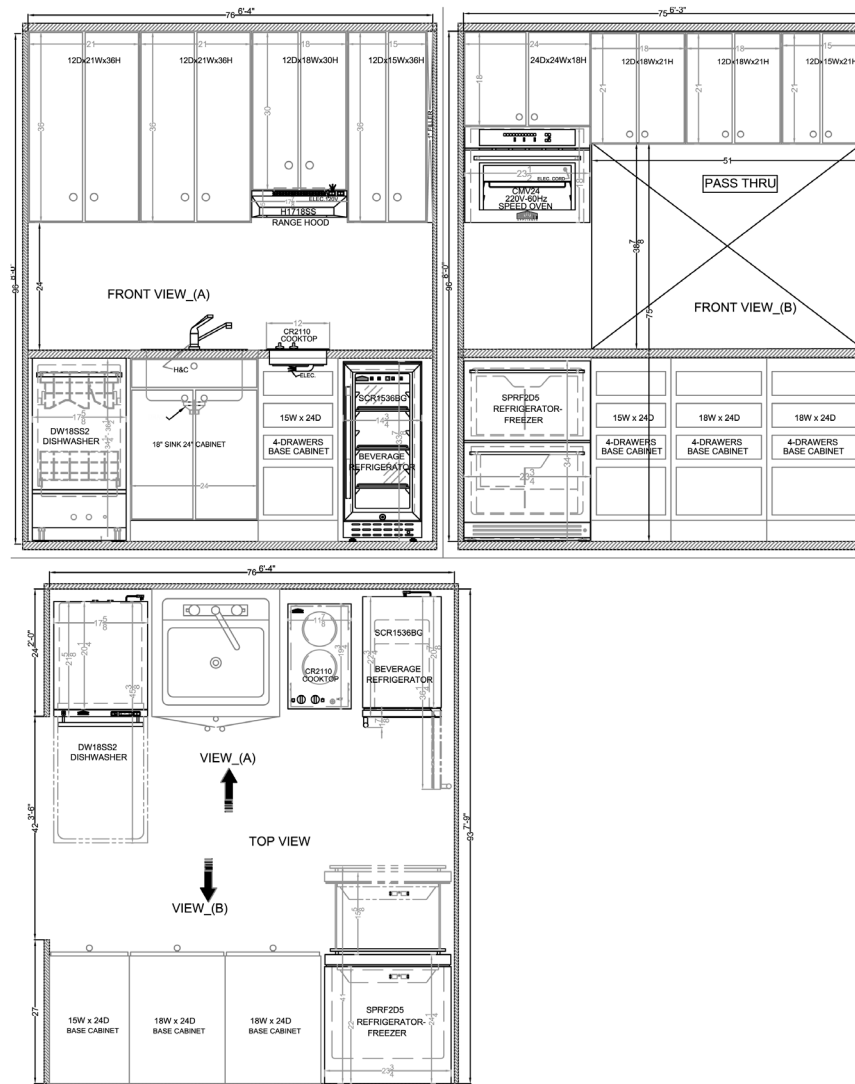


6'4" x 7'9" Galley Kitchen



Design# KITC16615

By using a more space conscious 2-burner cooktop and bringing the oven to the upper cabinets, you can maximize the counter surface without sacrificing function.



Drawings available in PDF or AutoCAD at www.summitappliance.com/smallkitchenplans

Ventilation In Every Size • 18", 20", 24", & Larger Range Hoods

Proper smoke and odor removal is even more important in small apartment kitchens, where there's less space for ventilation. With Summit's extra slim line of range hoods, you can ensure your kitchen is safely vented in as little as 18" of width.



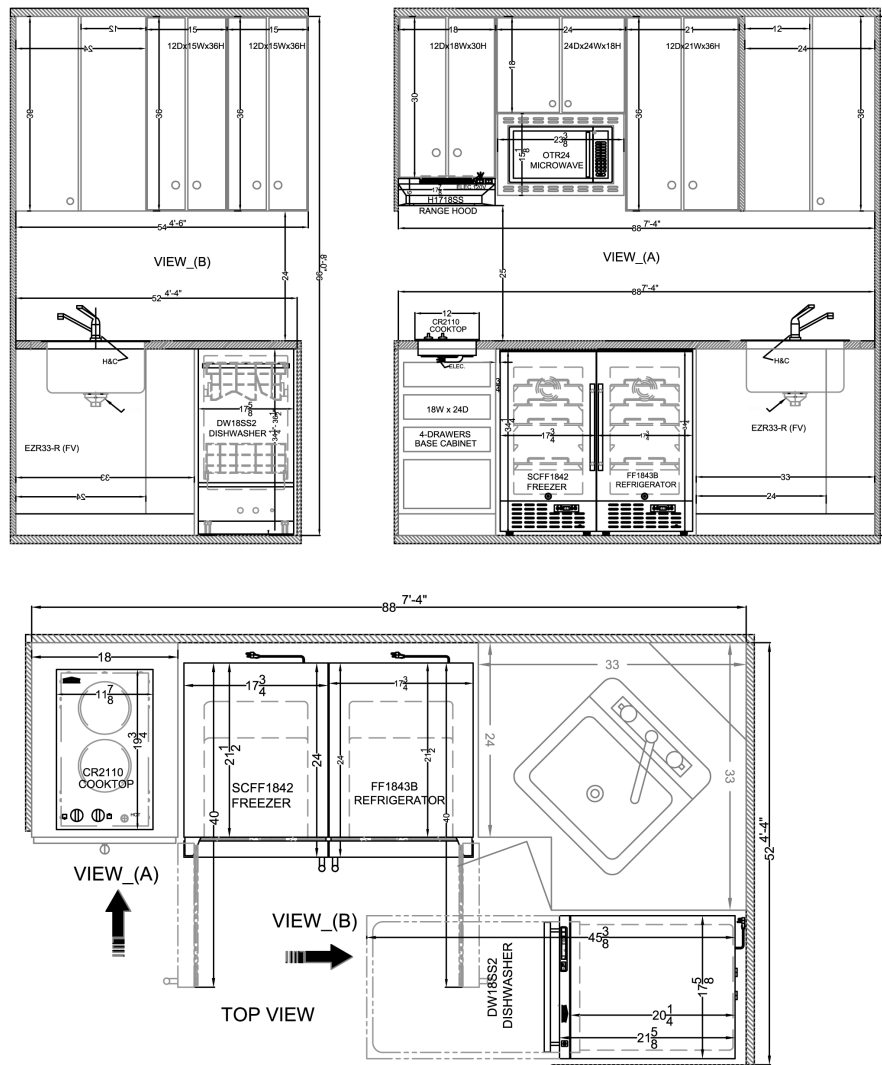


4'4 x 7'4 L-Shaped Kitchen



Design# KITC16405

For designs that might call for more wall cabinetry, our built-in refrigeration sets offer plenty of opportunity to free up space above the counter.



Drawings available in PDF or AutoCAD at www.summitappliance.com/smallkitchenplans

Free Up Floor Space • Built-In Cooktops

By combining cooktops with built-in microwaves or speed ovens, there's simply no need to take up a full 20"+ of kitchen real estate with a stove. 2-burner cooktops are perfect for studio apartments and can be ordered in gas, electric, or induction style. Our complete cooktop line includes even more unique choices, with 5-burner gas models sized at just 27" wide to take up less counter space than traditional models.



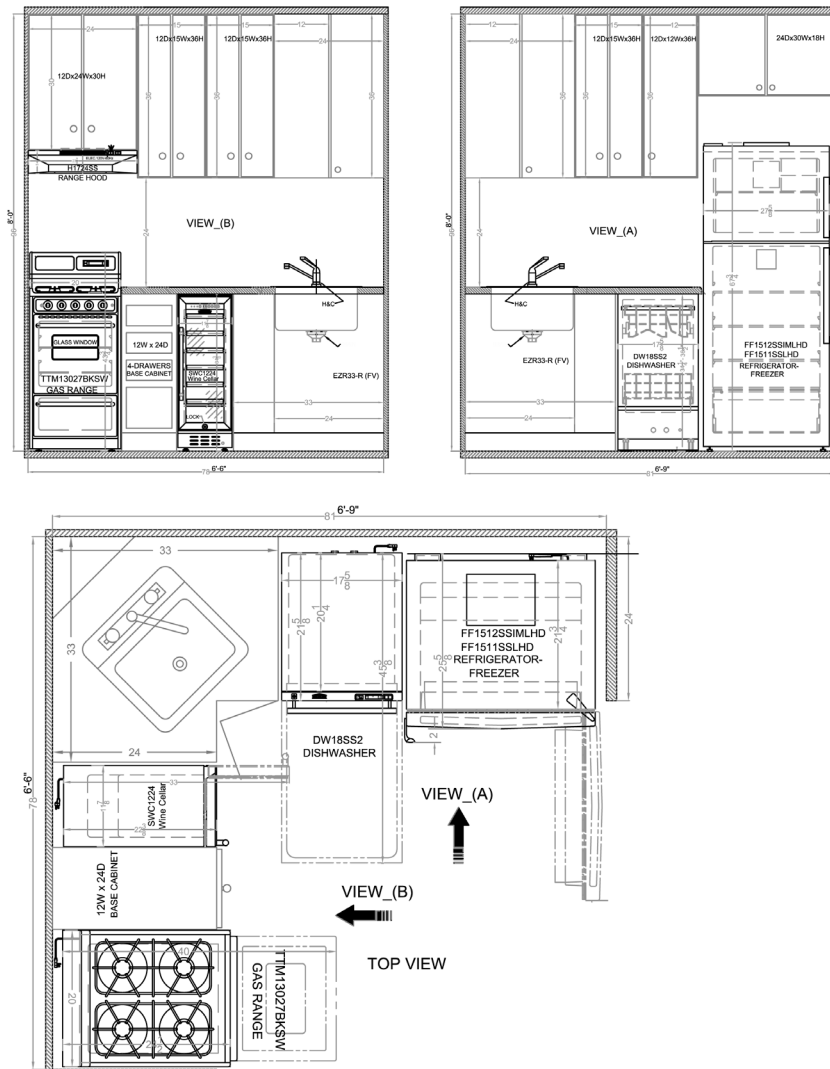


6'9 x 6'6 L-Shaped Kitchen



Design# KITC16410

It's all there: a gas or electric range with a matching hood, dishwasher, full-sized refrigerator, and even a wine cellar. The right appliances can truly make the smallest space feel just right.



Drawings available in PDF or AutoCAD at www.summitappliance.com/smallkitchenplans

Leftover Space? Let's Have a Toast! • 6" & 12" Wine Cellars

Dedicating an entire appliance to wine storage may seem unnecessary in a tiny kitchen, but when your wine cellar only needs 6" of space under the counter, it makes perfect sense. By inserting uniquely slim undercounter appliances into your design, you can open up the kitchen to new possibilities.

Appliance Specifications

Counter Depth Refrigerator-Freezers



**EUROPEAN
BOTTOM MOUNT**
FFBF181ES2

Height: 77 7/8"
Height to hinge cap: 78 3/8"
Width: 23 3/8"
Depth: 23 3/4"
Depth w/Handle: 25"
Depth w/Door 90°: 45 3/8"
Capacity: 11.7 cu.ft.
Door Swing: Specify RHD/LHD
Icemaker: Optional

74" high choice available (FFBF249SS2)



BOTTOM MOUNT
FFBF283SS

Height: 67 1/4"
Height to hinge cap: 67 3/4"
Width: 27 5/8"
Width w/Door Open: 28 3/8"
Depth: 26 1/4"
Depth w/Handle: 27 3/4"
Depth w/Door 90°: 51 3/8"
Capacity: 14 cu.ft.
Door Swing: Reversible
Icemaker: Optional



BOTTOM MOUNT
FFBF279SSX

Height: 67"
Height to hinge cap: 67 5/8"
Width: 27 5/8"
Width w/Door Open: 28 5/8"
Depth: 26 3/4"
Depth w/Door 90°: 52 1/2"
Capacity: 14.6 cu.ft.
Door Swing: Reversible
Icemaker: Optional

72" high choice with top grill available
(FFBF279SSXH72)



BOTTOM MOUNT
FFBF235PL

Height: 72 1/2"
Height to hinge cap: 73"
Width: 23 1/2"
Depth: 23 1/4"
Depth w/Handle: 25 3/4"
Depth w/Door 90°: 44 5/8"
Capacity: 10.8 cu.ft.
Door Swing: Reversible



**FRENCH DOOR/BOTTOM
DRAWER FREEZER**
FDRD152PL

Height: 69 1/2"
Height to hinge cap: 70 5/8"
Width: 27 1/2"
Width w/Door Open: 29 1/2"
Depth: 26 7/8"
Depth w/Door 90°: 39"
Capacity: 14.8 cu.ft.
Door Swing: French



TOP MOUNT
FF1515W (White)
FF1513SS (Stainless Steel)

Height: 67 1/4"
Height to hinge cap: 67 3/4"
Width: 27 1/2"
Width w/Door Open: 28 1/2"
Depth: 26 1/4"
Depth w/Handle: 27 3/4"
Depth w/Door 90°: 51 3/8"
Capacity: 13.63 cu.ft.
Door Swing: Reversible
Icemaker: Optional



TOP MOUNT
FF1088W (White)
FF1087B (Black)
FF1089PL (Stainless Steel)

Height: 59 5/8"
Height to hinge cap: 60 1/4"
Width: 23 1/4"
Width w/Door Open: 24"
Depth: 26 1/2"
Depth w/Door 90°: 48"
Capacity: 10.1 cu.ft.
Door Swing: Reversible
Icemaker: Optional



TOP MOUNT
FF1142PL

Height: 66 3/4"
Width: 23 1/2"
Width w/Door Open: 24 5/8"
Depth: 25 1/2"
Depth w/Door 90°: 50"
Capacity: 11.6 cu.ft.
Door Swing: Reversible

Appliance Specifications

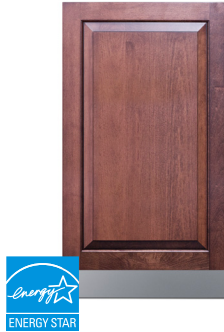
Laundry & Dishwashers



18" FRONT CONTROL DISHWASHER

DW18SS4

Height: 32 1/4" - 34"
 Width: 17 3/4"
 Depth: 22 3/8"
 Depth w/Door 90°: 45 1/2"
 Capacity: 8 place settings
 Sound: 49 dBA
 Options: ADA height



18" TOP CONTROL DISHWASHER

DW183WADA (White)
 DW184BADA (Black)
 DW185SSADA (Stainless Steel)
 DW186NTADA (Panel-Ready)

Height: 32 1/4" - 34"
 Width: 17 1/2"
 Depth: 22 1/2"
 Depth w/Handle: 24 1/2"
 Depth w/Door 90°: 45 1/2"
 Capacity: 8 place settings
 Sound: 47 dBA
 Options: ADA height



24" FRONT CONTROL DISHWASHER

DW2435SS

Height: 32 1/4" - 34"
 Width: 23 1/2"
 Depth: 22 3/8"
 Depth w/Door 90°: 45 1/2"
 Capacity: 12 place settings
 Sound: 49 dBA
 Options: ADA height



24" TOP CONTROL DISHWASHER

DW242WADA (White)
 DW243BADA (Black)
 DW244SSADA (Stainless Steel)
 DW245NTADA (Panel-Ready)

Height: 32 1/4" - 34"
 Width: 23 1/2"
 Depth: 22 1/2"
 Depth w/Handle: 24 1/2"
 Depth w/Door 90°: 45 1/2"
 Capacity: 12 place settings
 Sound: 47 dBA
 Options: ADA height



24" ALL-IN-ONE 115V NON-VENTED WASHER/DRYERS

SPWD2202W (White)
 SPWD2203PL (Silver)

Height: 33 1/4"
 Width: 23 3/8"
 Depth: 23 1/2"
 Depth w/Door 90°: 42 3/4"
 Capacity: 2.7 cu.ft.
 Voltage: 115V
 Amps: 10



24" EUROPEAN LAUNDRY STATION

SLS24W3P (3-prong plug)
 SLS24W4P (4-prong plug)

Height: 66"
 Width: 24"
 Depth: 26 1/2"
 Depth w/Door 90°: 45 1/2"
 Capacity: 6.18 cu.ft.
 Dryer Heat: Heat Pump
 Voltage: 220V
 Amps: 30



24" LAUNDRY STATION

LSWD24

Height: 66"
 Width: 23 3/4"
 Depth: 24 3/4"
 Depth w/Door 90°: 43 3/4"
 Capacity: 7.1 cu.ft.
 Dryer Heat: Heat Pump
 Voltage: 115V Washer/Dryer 220V
 Amps: 30

Appliance Specifications

Electric & Induction Ranges



20" SMOOTH-TOP
REX2051WRT (White)
REX2061BRT (Black)
REX2071SSRT (Stainless Steel)
 Height: 36 1/2"
 Width: 19 3/4"
 Depth: 24 1/4"
 Depth w/Handle: 26 1/2"
 Depth w/Door 90°: 44 1/4"
 Backguard: Removable 2"
 Broiler: In Oven
 ADA Compliant: Yes



20" SMOOTH-TOP WITH CONVECTION
REXT20W (White)
REXT20BL (Black)
REXT20SS (Stainless Steel)
 Height: 35 1/2"
 Width: 19 3/8"
 Depth: 23 5/8"
 Depth w/Handle: 25 1/8"
 Depth w/Door 90°: 40 7/8"
 Backguard: Removable 2"
 Broiler: In Oven
 ADA Compliant: Yes



20" COIL TOP
RE2031W (White)
RE2031B (Black)
PROEL20SS (Stainless Steel)
 Height: 41 3/4"
 Width: 19 1/2"
 Depth: 25 1/8"
 Depth w/Handle: 27 3/8"
 Depth w/Door 90°: 46 3/8"
 Backguard: Standard
 Broiler: In Oven
 ADA Compliant: Yes



30" COIL TOP
WEM230KW (White)
TEM230BKWY (Stainless Steel)
 Height: 44"
 Width: 30"
 Depth: 24"
 Depth w/Handle: 26"
 Depth w/Door 90°: 45"
 Backguard: Deluxe 8" with clock & timer
 Broiler: In Oven
 ADA Compliant: No



24" SMOOTH-TOP
REX2421WRT (White)
REX2431BRT (Black)
REX2451SSRT (Stainless Steel)
 Height: 36 1/2"
 Width: 23 3/4"
 Depth: 24 1/4"
 Depth w/Handle: 26 1/2"
 Depth w/Door 90°: 44 1/4"
 Backguard: Removable 2"
 Broiler: In Oven
 ADA Compliant: Yes



24" SMOOTH-TOP WITH CONVECTION
REXT24W (White)
REXT24BL (Black)
REXT24SS (Stainless Steel)
 Height: 35 1/2"
 Width: 23 3/8"
 Depth: 23 5/8"
 Depth w/Handle: 25 1/8"
 Depth w/Door 90°: 40 7/8"
 Backguard: Removable 2"
 Broiler: In Oven
 ADA Compliant: Yes



24" COIL TOP
RE2411W (White)
RE2413B (Black)
PROEL24SS (Stainless Steel)
 Height: 41 3/4"
 Width: 23 1/2"
 Depth: 25 1/8"
 Depth w/Handle: 27 3/8"
 Depth w/Door 90°: 46 3/8"
 Backguard: Standard
 Broiler: In Oven
 ADA Compliant: Yes



24" INDUCTION
WEM665W (White)
TEM665CW (Black)
TEM665BW (Stainless Steel)
 Height: 35 3/4"
 Width: 24 1/8"
 Depth: 24"
 Depth w/Handle: 26 1/2"
 Depth w/Door 90°: 35 1/2"
 Backguard: None
 Broiler: In Oven
 ADA Compliant: Yes

Appliance Specifications

Gas Ranges



20" SEALED BURNER LINE

RG200WS (White)
RG201B (Black)
PRO201SS (Stainless Steel)
 Height: 42"
 Width: 19 1/2"
 Depth: 23 1/2"
 Depth w/Handle: 25 3/4"
 Depth w/Door 90°: 43 1/4"
 Backguard: Standard
 Broiler: Lower Compartment
 ADA Compliant: Yes
 Burners: Sealed
 Ignitino: Spark
 Gas Type: Convertible



20" SEALED BURNER

TTM1307BIKSW
 Height: 44"
 Width: 20"
 Depth: 24"
 Depth w/Handle: 26"
 Depth w/Door 90°: 40"
 Backguard: Deluxe 8" with clock & timer
 Broiler: Lower Compartment
 ADA Compliant: No
 Burners: Sealed
 Ignitino: Spark
 Gas Type: Convertible with Kit

Battery-start options available



20" OPEN BURNER

TNM1107BRW (Stainless Steel)
 Height: 36"
 Width: 20"
 Depth: 24"
 Depth w/Handle: 26"
 Depth w/Door 90°: 40"
 Backguard: Low 1"
 Broiler: Lower Compartment
 ADA Compliant: Yes
 Burners: Open
 Ignitino: Spark
 Gas Type: Convertible with Kit

Battery-start options available



20" VALUE LINE

WNM1107 (White)
TNM1107C (Black)
 Height: 40"
 Width: 20"
 Depth: 24"
 Depth w/Handle: 25"
 Depth w/Door 90°: 40"
 Backguard: Standard
 Broiler: Lower Compartment
 ADA Compliant: Yes
 Burners: Open
 Ignitino: Spark
 Gas Type: Convertible with Kit

Battery-start options available



24" SEALED BURNER LINE

RG244WS (White)
RG240B (Black)
PRO247SS
 Height: 42"
 Width: 23 1/2"
 Depth: 23 1/2"
 Depth w/Handle: 25 3/4"
 Depth w/Door 90°: 43 1/4"
 Backguard: Standard
 Broiler: Lower Compartment
 ADA Compliant: Yes
 Burners: Sealed
 Ignitino: Spark
 Gas Type: Convertible



24" SEALED BURNER

TTM6307BIKSW
 Height: 44"
 Width: 24"
 Depth: 24"
 Depth w/Handle: 26"
 Depth w/Door 90°: 40"
 Backguard: Deluxe 8" with clock & timer
 Broiler: Lower Compartment
 ADA Compliant: No
 Burners: Sealed
 Ignitino: Spark
 Gas Type: Convertible with Kit

Battery-start options available



30" OPEN BURNER

TNM2107BRW
 Height: 36"
 Width: 30"
 Depth: 24"
 Depth w/Handle: 26"
 Depth w/Door 90°: 40"
 Backguard: Low 1"
 Broiler: Lower Compartment
 ADA Compliant: Yes
 Burners: Open
 Ignitino: Spark
 Gas Type: Convertible with Kit

Battery-start options available



30" VALUE LINE

WNM2107 (White)
TNM2107C (Black)
 Height: 40"
 Width: 30"
 Depth: 24"
 Depth w/Handle: 25"
 Depth w/Door 90°: 40"
 Backguard: Standard
 Broiler: Lower Compartment
 ADA Compliant: Yes
 Burners: Open
 Ignitino: Spark
 Gas Type: Convertible with Kit

Battery-start options available

Appliance Specifications

Electric & Gas Wall Ovens



24" x 24" 115V ELECTRIC WALL OVEN

SEW24SSX
 Exterior Height: 23 1/2"
 Exterior Width: 23 1/2"
 Cutout Height: 23 5/16"
 Cutout Width: 22"
 Cutout Depth: 24 1 1/16"
 Depth w/Door 90°: 40"
 Capacity: 2.5 cu.ft.
 Voltage: 115V
 Broiler: Inside

Standard NEMA 5-15 plug included



34" x 24" GAS WALL OVEN

WTM7212KW (White)
TTM7212DK (Black)
TTM788BKW (Stainless Steel)
TTM7212BKW (Black/SS)
STM7212KW (Bisque)
 Exterior Height: 35"
 Exterior Width: 24"
 Cutout Height: 34 1/8"
 Cutout Width: 22 3/8"
 Cutout Depth: 23"
 Depth w/Door 90°: 42 1/8"
 Capacity: 2.9 cu.ft.
 Voltage: 115V
 Broiler: Lower Compartment
 Gas Type: Convertible

Optional trim kit to raise height to 39"



34" x 24" 115V ELECTRIC WALL OVEN

WEM715KW (White)
TEM715DK (Black)
TEM755KW (Stainless Steel)

Exterior Height: 35"
 Exterior Width: 24"
 Cutout Height: 34 1/8"
 Cutout Width: 22 3/8"
 Cutout Depth: 23"
 Depth w/Door 90°: 42 1/8"
 Capacity: 2.9 cu.ft.
 Voltage: 115V
 Broiler: Inside

*Standard NEMA 5-15 plug included
 Optional trim kit to raise height to 39"*



27" GAS WALL OVEN

SGWOGD27
 Exterior Height: 23 3/8"
 Exterior Width: 27 3/8"
 Cutout Height: 23 1/8"
 Cutout Width: 26 3/8"
 Cutout Depth: 24"
 Depth w/Door 90°: 36 3/4"
 Capacity: 3 cu.ft.
 Voltage: 115V
 Broiler: Inside
 Gas Type: Convertible



34" x 24" 220V ELECTRIC WALL OVEN

TEM788BKW (Stainless Steel)
TEM721DK (Black)
TEM721BKW (Stainless Steel/Blk)

Exterior Height: 35"
 Exterior Width: 24"
 Cutout Height: 34 1/8"
 Cutout Width: 22 3/8"
 Cutout Depth: 23"
 Depth w/Door 90°: 42 1/8"
 Capacity: 2.9 cu.ft.
 Voltage: 220V
 Broiler: Inside

Optional trim kit to raise height to 39"



30" GAS WALL OVEN

SGWOGD30
 Exterior Height: 27"
 Exterior Width: 29 1/2"
 Cutout Height: 26 5/8"
 Cutout Width: 28"
 Cutout Depth: 24"
 Depth w/Door 90°: 39 3/4"
 Capacity: 3 cu.ft.
 Voltage: 115V
 Broiler: Inside
 Gas Type: Convertible

Appliance Specifications

Microwaves & Speed Ovens



24" WIDE BUILT-IN MICROWAVE OTR24

Exterior Height: 15 1/8"
Exterior Width: 23 3/8"
Cutout Height: 13 13/16"
Cutout Width: 22"
Cutout Depth: 16 3/16"
Capacity: 0.9 cu.ft.
Voltage: 115V



27" & 30" WIDE BUILT-IN MICROWAVE

SMBI27TK27 (27")
SMBI27TK30 (30")
Exterior Height: 18 7/8"
Exterior Width: 26 7/8"
Cutout Height: 17 1/8"
Cutout Width: 25 1/2"
Cutout Depth: 22 3/4"
Depth w/Door 90°: 39 7/8"
Capacity: 2.2 cu.ft.
Voltage: 115V



24" WIDE DRAWER MICROWAVE

MDR2455S
Exterior Height: 17 7/8"
Exterior Width: 23 1/2"
Cutout Height: 14 13/16"
Cutout Width: 22 1/8"
Cutout Depth: 23 1/2"
Depth w/Door 90°: 39 3/8"
Capacity: 1.2 cu.ft.
Voltage: 115V



30" WIDE DRAWER MICROWAVE

MDR30SS
Exterior Height: 15 7/8"
Exterior Width: 29 3/4"
Cutout Height: 14 13/16"
Cutout Width: 28 7/16"
Cutout Depth: 23 1/2"
Depth w/Door 90°: 38 5/8"
Capacity: 1.2 cu.ft.
Voltage: 115V



24" OVER-THE-RANGE MICROWAVE

MHOTR241W (White)
MHOTR242B (Black)
MHOTR243SS (Stainless Steel)
Exterior Height: 17 1/8"
Exterior Width: 24"
Cutout Height: 17 1/8"
Cutout Width: 24"
Cutout Depth: 17"
Depth w/Door 90°: 28 3/4"
Capacity: 1.4 cu.ft.
Voltage: 115V



30" OVER-THE-RANGE MICROWAVE OTRSS301

Exterior Height: 16 7/8"
Exterior Width: 29 7/8"
Cutout Height: 16 1/2"
Cutout Width: 30"
Cutout Depth: 17"
Depth w/Door 90°: 38 5/8"
Capacity: 1.6 cu.ft.
Voltage: 115V



24" WIDE 115V SPEED OVEN CMV115

Exterior Height: 17 7/8"
Exterior Width: 23 7/16"
Cutout Height: 17 3/4"
Cutout Width: 22 3/16"
Cutout Depth: 22"
Depth w/Door 90°: 34 3/4"
Capacity: 1.6 cu.ft.
Voltage: 115V



24" WIDE 240V SPEED OVEN CMV24

Exterior Height: 18"
Exterior Width: 23 1/2"
Cutout Height: 17 5/8"
Cutout Width: 22"
Cutout Depth: 21 5/8"
Depth w/Door 90°: 34 3/4"
Capacity: 1.34 cu.ft.
Voltage: 240V

Appliance Specifications

Induction Cooktops



12" 115V 2-ZONE SINC2B115

Burners: 2
Exterior Height: 2"
Exterior Width: 11 3/8"
Exterior Depth: 20 1/2"
Cutout Height: 3 1/4"
Cutout Width: 10 5/8"
Cutout Depth: 19 5/8"
Voltage: 115V
Amperage: 15
Power: NEMA 5-15
ADA Compliant: Yes



12" 220V 2-ZONE SINC2B231W (White) SINC2B230B (Black)

Burners: 2
Exterior Height: 2"
Exterior Width: 11 3/8"
Exterior Depth: 20 1/2"
Cutout Height: 3 1/4"
Cutout Width: 10 5/8"
Cutout Depth: 19 5/8"
Voltage: 208-220V
Amperage: 15
Power: Hardwired
ADA Compliant: Yes



12" 115V SAFETY-FIRST 2-ZONE SINCH115V2B

Burners: 2
Exterior Height: 2"
Exterior Width: 11 3/8"
Exterior Depth: 20 1/2"
Cutout Height: 3 1/4"
Cutout Width: 10 5/8"
Cutout Depth: 19 5/8"
Voltage: 115V
Amperage: 15
Power: NEMA 5-15
ADA Compliant: Yes

30-minute auto shutoff



12" 220V SAFETY-FIRST 2-ZONE SINCH230V2B

Burners: 2
Exterior Height: 2"
Exterior Width: 11 3/8"
Exterior Depth: 20 1/2"
Cutout Height: 3 1/4"
Cutout Width: 10 5/8"
Cutout Depth: 19 5/8"
Voltage: 208-220V
Amperage: 15
Power: Hardwired
ADA Compliant: Yes

30-minute auto shutoff



24" 4-ZONE SINC4B242W (White) SINC4B241B (Black)

Burners: 4
Exterior Height: 2"
Exterior Width: 23 1/4"
Exterior Depth: 20 1/2"
Cutout Height: 3 1/4"
Cutout Width: 27 7/8"
Cutout Depth: 19 5/8"
Voltage: 208-220V
Amperage: 30
Power: Hardwired
ADA Compliant: Yes



30" 4-ZONE SINC4B302W (White) SINC4B301B (Black)

Burners: 4
Exterior Height: 2"
Exterior Width: 30 1/4"
Exterior Depth: 20 1/2"
Cutout Height: 3 1/4"
Cutout Width: 29 7/8"
Cutout Depth: 19 5/8"
Voltage: 208-220V
Amperage: 30
Power: Hardwired
ADA Compliant: Yes



36" 5-ZONE SINC5B36W (White) SINC5B36B (Black)

Burners: 5
Exterior Height: 2"
Exterior Width: 35 1/2"
Exterior Depth: 20 1/2"
Cutout Height: 3 1/4"
Cutout Width: 34 5/8"
Cutout Depth: 19 5/8"
Voltage: 208-220V
Amperage: 50
Power: Hardwired
ADA Compliant: Yes

Appliance Specifications

Coil, Radiant, & Solid Disk Cooktops



12" EUROPEAN 2-BURNER CR2220WHE CR2220B

Burners: 2
Type: Radiant glass
Exterior Height: 4 3/8"
Exterior Width: 11 7/8"
Exterior Depth: 19 3/4"
Cutout Height: 5"
Cutout Width: 10 3/4"
Cutout Depth: 19"
Controls: Knob
Voltage: 208-220V
Amperage: 10
Power: Hardwired
ADA Compliant: Yes

115V versions available



12" SAFETY-FIRST 2-BURNER CRH2BT30230

Burners: 2
Type: Radiant glass
Exterior Height: 2"
Exterior Width: 11 3/8"
Exterior Depth: 20 1/2"
Cutout Height: 4"
Cutout Width: 10 5/8"
Cutout Depth: 19 1/2"
Controls: Touch
Voltage: 208-220V
Amperage: 15
Power: Hardwired
ADA Compliant: Yes

115V versions available; 30-minute auto shutoff



12" SOLID DISK 2-BURNER CSD2B230

Burners: 2
Type: Solid disk
Exterior Height: 4 1/4"
Exterior Width: 11 1/4"
Exterior Depth: 20"
Cutout Height: 5"
Cutout Width: 10 1/2"
Cutout Depth: 19 1/4"
Controls: Knob
Voltage: 208-220V
Amperage: 12.5
Power: Hardwired
ADA Compliant: Yes

115V versions available



12" COIL 2-BURNER

CCE211WH
CCE212BL
CCE213SS
Burners: 2
Type: Coil
Exterior Height: 3 1/4"
Exterior Width: 12"
Exterior Depth: 19 3/4"
Cutout Height: 5"
Cutout Width: 11 1/8"
Cutout Depth: 19 1/8"
Controls: Knob
Voltage: 115V
Amperage: 12.5
Power: NEMA 5-15 cord included
ADA Compliant: Yes

220V versions available



24" RADIANT 4-BURNER CR4B23T6W (White) CR4B23T5B (Black)

Burners: 4
Type: Radiant glass
Exterior Height: 2"
Exterior Width: 23 1/4"
Exterior Depth: 20 1/2"
Cutout Height: 3 1/4"
Cutout Width: 22"
Cutout Depth: 19 1/2"
Controls: Touch
Voltage: 208-220V
Amperage: 30
Power: Hardwired
ADA Compliant: Yes



24" COIL 4-BURNER CR430SS

Burners: 4
Type: Coil
Exterior Height: 2 5/8"
Exterior Width: 29 3/8"
Exterior Depth: 20"
Cutout Height: 5"
Cutout Width: 28"
Cutout Depth: 19 1/2"
Controls: Knob
Voltage: 208-220V
Amperage: 20
Power: Hardwired
ADA Compliant: Yes



30" RADIANT 5-BURNER CR5B30T8W (White) CR5B30T7B (Black)

Burners: 5
Type: Radiant glass
Exterior Height: 2 1/8"
Exterior Width: 30 1/4"
Exterior Depth: 20 1/2"
Cutout Height: 3 1/4"
Cutout Width: 29 1/2"
Cutout Depth: 19 5/8"
Controls: Touch
Voltage: 208-220V
Amperage: 30
Power: Hardwired
ADA Compliant: Yes



36" RADIANT 5-BURNER CR5B36TXW (White) CR5B36T9B (Black)

Burners: 5
Type: Radiant glass
Exterior Height: 2 1/8"
Exterior Width: 35 1/2"
Exterior Depth: 20 1/2"
Cutout Height: 3 1/4"
Cutout Width: 34 3/4"
Cutout Depth: 19 5/8"
Controls: Touch
Voltage: 208-220V
Amperage: 30
Power: Hardwired
ADA Compliant: Yes

Appliance Specifications

Gas Cooktops



12'' 2-BURNER GAS-ON-GLASS GC2BGL

Burners: 2 sealed
Exterior Height: 2''
Exterior Width: 12 1/4''
Exterior Depth: 20 3/8''
Cutout Height: 2 1/2''
Cutout Width: 11''
Cutout Depth: 18 7/8''
Ignition: Spark
Gas Type: Convertible



24'' WIDE VALUE OPEN BURNER

WNL033 (White)
TNL033 (Black)
ZNL033 (Stainless Steel look)
SNL033 (Bisque)
Burners: 4 open
Exterior Height: 3 3/4''
Exterior Width: 24''
Exterior Depth: 20''
Cutout Height: 6''
Cutout Width: 22 5/8''
Cutout Depth: 18 5/8''
Ignition: Spark
Gas Type: Convertible with kit

Battery-start options available



24'' WIDE 4-BURNER GCJ4SS

Burners: 4 sealed
Exterior Height: 2 7/8''
Exterior Width: 23 5/8''
Exterior Depth: 20 1/8''
Cutout Height: 6''
Cutout Width: 22''
Cutout Depth: 18 7/8''
Ignition: Spark
Gas Type: Convertible



27'' WIDE 5-BURNER GC5271W (White) GC5272B (Black) GC527SS (Stainless Steel)

Burners: 5 sealed
Exterior Height: 4''
Exterior Width: 26 3/4''
Exterior Depth: 19 3/4''
Cutout Height: 6''
Cutout Width: 21 3/4''
Cutout Depth: 18 5/8''
Ignition: Spark
Gas Type: Convertible



30'' WIDE VALUE OPEN BURNER

WNL053 (White)
TNL053 (Black)
ZNL053 (Stainless Steel look)
SNL053 (Bisque)
Burners: 4 open
Exterior Height: 3 3/4''
Exterior Width: 29 3/4''
Exterior Depth: 20''
Cutout Height: 6''
Cutout Width: 28 3/8''
Cutout Depth: 18 5/8''
Ignition: Spark
Gas Type: Convertible with kit

Battery-start options available



30'' WIDE 4-BURNER GC431W (White) GC432B (Black)

Burners: 4 sealed
Exterior Height: 2 7/8''
Exterior Width: 29 1/2''
Exterior Depth: 20''
Cutout Height: 6''
Cutout Width: 21 3/4''
Cutout Depth: 18 7/8''
Ignition: Spark
Gas Type: Convertible



30'' WIDE 5-BURNER GCJ5SS

Burners: 5 sealed
Exterior Height: 2 7/8''
Exterior Width: 29 1/2''
Exterior Depth: 20''
Cutout Height: 6''
Cutout Width: 21 3/4''
Cutout Depth: 18 7/8''
Ignition: Spark
Gas Type: Convertible



34/36'' WIDE 5-BURNER GCJ536SS GCJ536SSTK36

Burners: 5 sealed
Exterior Height: 2 7/8''
Exterior Width: 33 7/8'' / 36''
Exterior Depth: 20''
Cutout Height: 6''
Cutout Width: 32 3/4''
Cutout Depth: 18 3/4''
Ignition: Spark
Gas Type: Convertible

Model GCJ536SSTK36 included stainless steel trim kit to fit 36'' spaces

Appliance Specifications

Range Hoods



EUROPEAN STYLE WALL-MOUNT

SEH1524SS (24")
SEH1530SS (30")
SEH1536SS (36")

Minimum Height: 25 1/2"
Maximum Height: 37 1/4"
Depth: 19 1/16"
Finish: Stainless steel
Operation: Convertible
Duct: 6" Round
CFM: 400
ADA Option: Yes



EUROPEAN STYLE WALL-MOUNT

SEH3624SS (24")
SEH3630SS (30")
SEH3636SS (36")

Minimum Height: 25 1/2"
Maximum Height: 37"
Depth: 19 1/16"
Finish: Stainless steel
Operation: Convertible
Duct: 6" Round
CFM: 400
ADA Option: Yes



EUROPEAN STYLE WALL-MOUNT

SEH4624SS (24")
SEH4630SS (30")
SEH4636SS (36")

Minimum Height: 15 3/4"
Maximum Height: 29 1/2"
Depth: 19 1/16"
Finish: Stainless steel
Operation: Convertible
Duct: 6" Round
CFM: 400
ADA Option: Yes



UNDER CABINET

HC20W (20")
HC24W (24")
HC30W (30")

Height: 5 1/2"
Depth: 18 5/8"
Finish: White
Operation: Convertible
Duct: 3 1/4" x 10" rectangular or 7" round with transition
CFM: 270
ADA Option: Yes



UNDER CABINET

HC20B (20")
HC24B (24")
HC30B (30")

Height: 5 1/8"
Depth: 18 5/8"
Finish: Black
Operation: Convertible
Duct: 3 1/4" x 10" rectangular or 7" round with transition
CFM: 270
ADA Option: Yes



UNDER CABINET

HC20SS (20")

Height: 5 1/8"
Depth: 18 5/8"
Finish: Stainless steel
Operation: Convertible
Duct: 3 1/4" x 10" rectangular or 7" round with transition
CFM: 270
ADA Option: Yes



UNDER CABINET

H24RSS (24")
H30RSS (30")
H36RSS (36")

Height: 5 1/8"
Depth: 18 5/8"
Finish: Stainless steel
Operation: Convertible
Duct: 3 1/4" x 10" rectangular or 7" round with transition
CFM: 140
ADA Option: Yes

Appliance Specifications

Built-In Undercounter Refrigeration, Wine, & Beverage



18" 1-DRAWER WINE CELLAR

COOL1D

Height: 11 7/8"
 Width: 17 7/8"
 Depth: 20 5/8"
 Depth w/Handle: 22 1/2"
 Depth w/Door 90°: 31 1/8"
 Capacity: 8 Bottles
 Door Swing: Drawer
 Additional Colors: Stainless steel,
 Panel-Ready

Single drawer choices in 21", 24", & 30"



6" WINE CELLAR

SWC007

Height: 32 1/4 - 34"
 Width: 5 7/8"
 Depth: 20 3/4"
 Depth w/Handle: 22 3/8"
 Depth w/Door 90°: 25 1/2"
 Capacity: 7 Bottles
 Door Swing: Reversible
 ADA Option: Yes
 Additional Colors: Stainless steel,
 Panel-Ready



12" WINE CELLAR

SWC1224B

Height: 34 3/8"
 Width: 11 7/8"
 Depth: 22 3/8"
 Depth w/Handle: 24 1/8"
 Depth w/Door 90°: 33"
 Capacity: 21 Bottles
 Door Swing: Reversible
 ADA Option: Yes
 Additional Colors: Stainless steel

Matching beverage center available



15" SHALLOW DEPTH WINE CELLAR

SDHW1532

Height: 33 3/4"
 Width: 14 3/4"
 Depth: 18"
 Depth w/Handle: 19 3/4"
 Depth w/Door 90°: 32 5/8"
 Capacity: 18 Bottles
 Door Swing: Reversible
 ADA Option: Yes
 Additional Colors: Stainless steel,
 Panel-Ready

Matching beverage center available



24" REFRIGERATOR-FREEZER

CT661W (White)

CT663BK (Black)

Height: 32 3/8 - 34"
 Width: 23 5/8"
 Depth: 23"
 Depth w/Handle: 24 3/8"
 Depth w/Door 90°: 45 3/8"
 Capacity: 5.04 cu.ft.
 Door Swing: Reversible
 ADA Option: Yes
 Additional Colors: Stainless steel,
 Panel-Ready, Blue, Green, Yellow,
 Purple



24" 2-DRAWER REFRIGERATOR-FREEZER

SPRF34D

Height: 34"
 Width: 23 5/8"
 Depth: 23 3/4"
 Depth w/Handle: 25 1/8"
 Depth w/Door 90°: 39 1/4"
 Capacity: 3.9 cu.ft.
 Door Swing: Drawer
 ADA Option: Yes
 Icemaker: Optional
 Additional Colors: Stainless steel,
 Panel-Ready

Also available as an all-refrigerator or all-freezer



30" REFRIGERATOR-FREEZER

FFRF3075 (White)

FFRF3070B (Black)

Height: 34"
 Width: 29 1/2"
 Depth: 23 3/8"
 Depth w/Handle: 25 3/8"
 Depth w/Door 90°: 37 1/4"
 Capacity: 5.4 cu.ft.
 Door Swing: French
 Additional Colors: Stainless steel,
 Panel-Ready



36" REFRIGERATOR-FREEZER

FFRF36

Height: 34 1/4"
 Width: 35 1/2"
 Width w/Door Open: 36 3/4"
 Depth: 24 1/4"
 Depth w/Handle: 25 1/8"
 Depth w/Door 90°: 40"
 Capacity: 5.4 cu.ft.
 Door Swing: French
 ADA Option: Yes
 Additional Colors: Stainless steel,
 Panel-Ready

All-In-One Kitchenettes

Combines the refrigerator, sink, storage cabinets, and cooktop in various configurations starting at just 30" wide



Perfect for efficiency apartments, SROs, in-law suites, and other budget residences with limited space and power.





SUMMIT
APPLIANCE

Small Kitchen Design Book

Designed by Summit, the
Appliance Industry's Answer
to Space-Challenged Kitchens

Summit Appliance Division, Felix Storch, Inc. ISO 9001:2015 CERTIFIED
770 Garrison Avenue, Bronx, NY 10474 USA • TEL 718.893.3900 • FAX 844.478.8799 • info@summitappliance.com • summitappliance.com

202409