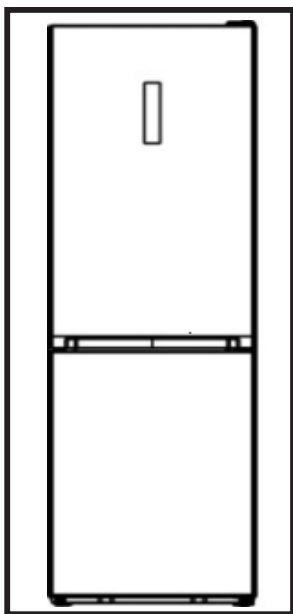


SUMMIT



TWO-DOOR REFRIGERATOR with BOTTOM FREEZER

Model No.FFBF192SS



User's Manual

Please record the serial number, which is found on a label inside the refrigerator.

FELIX STORCH, INC.
ISO 9001:2015 registered
770 Garrison Avenue
Bronx, New York 10474
www.summitappliance.com

Staple your receipt to this manual. **You will need it to obtain warranty service.**

Contents

Brief introduction	2	Using your appliance.....	14
Important safety instructions	2	Helpful hints and tips.....	15
Installing your new appliance.....	5	Cleaning and care.....	17
Description of the appliance.....	11	Trouble shooting	18
Display controls.....	12	Disposal of the appliance.....	19
		Limited Warranty.....	20

Brief introduction

Thank you for choosing the appliance. Before using the appliance, please read through these instructions carefully, which provide details about this product's usage and functions.

- Please ensure that all people using this appliance are familiar with its operations and safety features. It is important that you install the appliance correctly and follow the safety instructions carefully.

- We recommend that you keep this user's manual with the appliance for future reference and retain it for any future users
- This appliance is intended to be used residentially and similar environments.
- If you feel that the appliance is not operating correctly, please check the Trouble shooting page for assistance. If still in doubt contact the customer service help line for assistance.

Important safety instructions

General safety and daily use



It is important to use your appliance safely.

We recommend that you follow the guidelines below. Store any food in accordance with the storage instructions from the manufacturer.

This appliance is intended to be used in household and similar applications such as

- Staff kitchen areas in shops, offices and other working environments;
- Farm houses and by clients in hotels, motels and other residential type environments;
- Bed and breakfast type environments;
- Catering and similar non-retail applications.

WARNING: Don't use mechanical devices or any other means to speed up the defrosting process, unless they are approved by the manufacturer.

WARNING: Don't try to repair the appliance yourself. It is dangerous to alter the specifications or modify this product in anyway. Any damage to the cord may cause short circuit, fire or electric shock.

WARNING: Pay attention not to damage the tubing of the refrigerant circuit.

WARNING: Keep ventilation openings, in the appliance enclosure or in the built-in structure, clear of obstruction.

- Don't place too much food directly against the air outlet on the rear wall of both the refrigerator and freezer compartment, as it affects sufficient air circulation.
- Don't place hot items near the plastic components of this appliance.
- Frozen food must not be refrozen once it has been thawed out.
- Don't store bottled or canned drinks (especially carbonated drinks) in the freezer compartment. Bottles and cans may explode.
- To avoid items falling and causing

damage to the appliance, do not overload the door racks or put too much food in the crisper drawers.

Warnings for children and infirm persons



This appliance is not intended for use by persons (including children) with reduced physical, sensory or mental capabilities, or a lack of experience and knowledge, unless they have been given supervision or instruction concerning the use of the appliance by a person responsible for their safety. Children should be supervised to ensure that they do not play with the appliance.

- Keep all packaging away from children to avoid risk of suffocation.
- Protect children from being burned by touching the very hot compressor or at the rear bottom of appliance
- Don't place items on top of the appliance as this could cause injury should they fall off.
- Never allow children to play with the appliance by hanging or standing over or on the doors, racks, shelves and drawers etc.

Electrical safety warnings



To avoid the risks that are always present when using an electric appliance, we recommend that carefully read the below electrical instructions.

- Unpack the appliance and check through the appliance. Should any damage be evident, don't plugin the appliance and immediately contact the store from which you purchased it. Keep all packing materials in this case.
- We recommend that you wait for 4 hours, with the product upright, before connecting the appliance to allow the refrigerant to flow back into the compressor.
- The appliance must be supplied with single phase alternating current of

115V/60Hz. If the voltage fluctuates widely, an A.C. automatic voltage regulator of more

than 350W should be applied to the refrigerator for safe use.

- The main plug must be accessible when the appliance is installed.
- This appliance is fitted with a 3-prong plug in accordance with local standard. The 3-prong plug should be suitable for use in all houses fitted with sockets in accordance with current specifications.
- Do not use extension cords or multiple sockets which could cause overloading of wiring circuits and could cause a fire. Always plug your appliance into its own individual electrical socket which has a voltage rating that matches the rating plate.
 - **If the SUPPLY CORD is damaged, it must be replaced by the manufacturer, its service agent or similarly qualified person in order to avoid a hazard.**
- Make sure that the plug is not squashed or damaged. Otherwise, it may cause short circuit, electric shock, overheating, and even cause a fire.
 - Do not insert the main plug if the socket is loose, there is a risk of electric shock or fire.
 - Switch off the appliance and disconnect it from the main power before you clean or move it.
 - Never unplug the appliance by pulling the electrical cord. Always grip the plug firmly and pull straight out from the socket to prevent damaging the power cord.
 - Do not operate the appliance without the interior lightcover installed.
 - Any electrical component must be replaced or repaired by a qualified electrician or authorized service engineer.

-
- Do not use electrical appliances such as ice cream makers inside the food storage compartments of the appliance, unless they are approved by the manufacturer.

**Fire Hazard**

The appliance contains a small quantity of refrigerant (R600a) which is environmentally friendly but potentially flammable in the refrigeration circuit.

- Pay attention not to damage tubing of the refrigerant circuit during transportation and installation to avoid a risk of fire or explosion following a refrigerator leak.

- Keep candles, lamps and other items with open flames and sources of heat away from the appliance, ventilate the room thoroughly to avoid the risk of fire and eye injury should any leakage of refrigerant occur.

- Do not store products which contain flammable propellants (e. g. spray cans) or explosive substances in the appliance.

DANGER: Risk of child entrapment. Before you throw away your old refrigerator or freezer:

- Take off the doors
 - Leave the shelves in place so that children may not easily climb inside.
-

Installing your new appliance

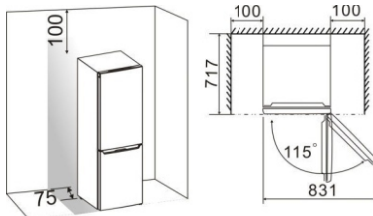
Before using the appliance for the first time, you should be informed of the following tips.

Ventilation of appliance



In order to improve efficiency of the cooling system and save energy, it is necessary to maintain good ventilation around the appliance. For this reason, sufficient clear space should be available around the refrigerator.

Suggest :It is advisable for there to be at least 75mm of space from the back to the wall, at least 100mm from its top, at least 100mm from its side to the wall and a clear space in front to allow the doors to open 115°. As shown in follow diagrams.



Note:

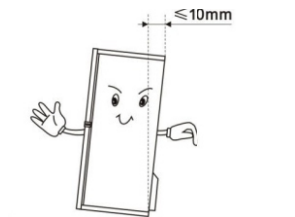
- This appliance performs well within the climate class showed in the table below. It may not work properly if being left at a temperature above or below the indicated range for a long period.

Climate class	Ambient temperature
SN	+10°C to +32°C
N	+16°C to +32°C
ST	+16°C to +38°C
T	+16°C to +43°C

- Stand your appliance in a dry place to avoid high moisture.
- Keep the appliance out of direct sunlight, rain or frost. Stand the appliance away from heat sources such as stoves, fires or heaters.

Leveling of appliance

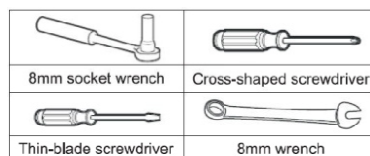
- For sufficient leveling and air circulating in the lower rear section of the appliance, the bottom feet may need to be adjusted. You can adjust them manually by hand or by using a suitable wrench.
- To allow the doors to self-close, tilt the top backwards by about 10mm.



Reversing the door

The side at which the door opens can be changed, from the right side (as supplied) to the left side, if the installation site requires.

Warning! When reversing the door, the appliance must not be connected to the mains. Ensure that the plug is removed from the mains socket..



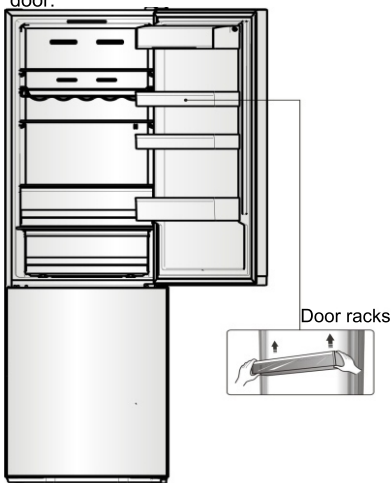
Tools you will need

Note:

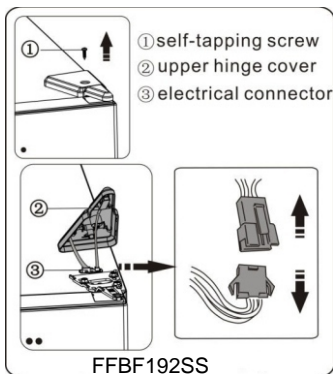
- When required, tilt the refrigerator back in order to gain access to the base, you should rest the appliance on soft foam packaging or similar material to avoid damaging the backboard of the refrigerator. To reverse the door, the following steps are generally recommended. Different models may

correspond to different pictures. Models will be written in the picture. If some parts are not shown in the picture, please ignore the relevant description.

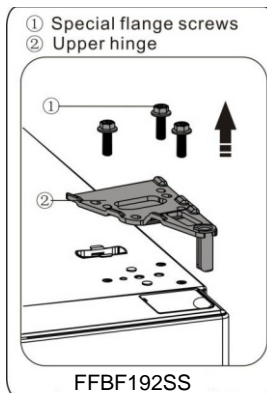
1. Stand the refrigerator upright. Open the upper door to take out all door racks (to avoid racks damaged) and then close the door.



2. Remove part ①, loose part ② from the top right side of refrigerator and be careful of the electrical connector ③ below, because electrical connectors are still connected. Then disconnect electrical connector ③ and take down part ②.



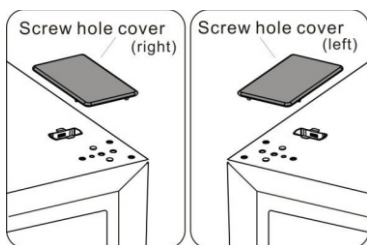
3. Remove screws ① and hinge ②. Then pass connector ③ through the hole of hinge ②. (Please hold upper door by hand when installing)



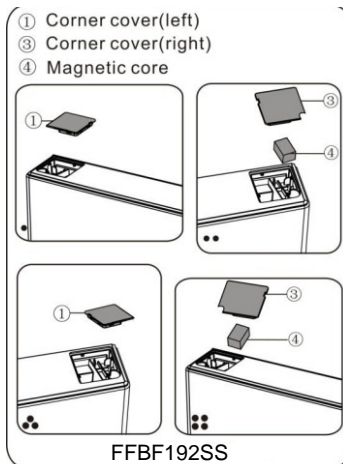
4. Remove the upper door from the middle hinge by carefully lifting the door straight up. Then place the upper door on a smooth surface with its upper cover upwards.



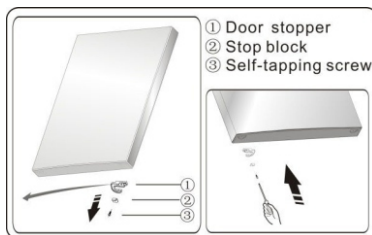
5. Take screw hole cover(right) from plastic bag and install it onto the top right side of refrigerator body. Then remove screw hole cover(left) from the top left side of appliance and put it into plastic bag.



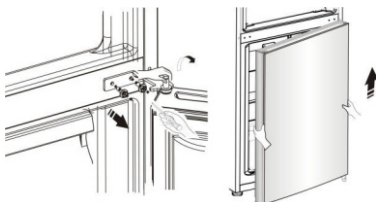
6. Remove part ① from the top left side of upper cover and take out part ②. Then remove part ③ and part ④ from the top right side of upper cover. Put part ⑤ into the top right side of upper cover. Refer to above operation, install part ③ and part ④ onto the top left side of upper cover. Install part ① of the top right side of upper cover.



7. Loose screw ③ and take down part ② and part ①. Install replacement door stopper-left ④ provided (in the plastic bag) and part ②(stop block) to the left side with screw ③. Keep part ① with the appliance for future reference.



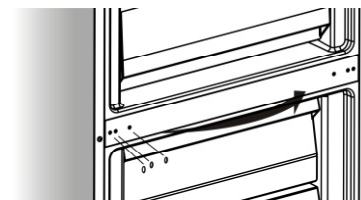
8. Loose screws used to fix the middle hinge and remove middle hinge. Then remove the lower door.



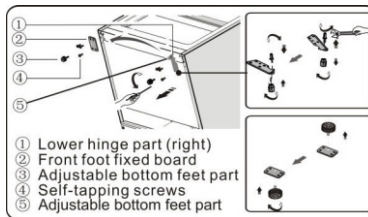
9. Place the lower door on a smooth surface with its panel upwards. Loose screw ③ and take down part ② and part ①, Install replacement door stopper-left ④ provided (in the plastic bag) and part ②(stop block) to the left side with screw ③. Keep part ① with the appliance for future reference.



10. Change screw hole covers on middle cover plate from left to right (as shown in figure below).



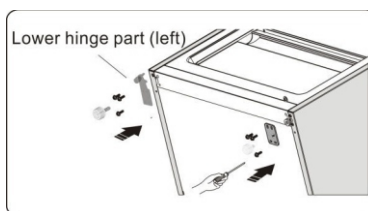
11. Tip the refrigerator backwards, remove part ③ and then remove screws ④.



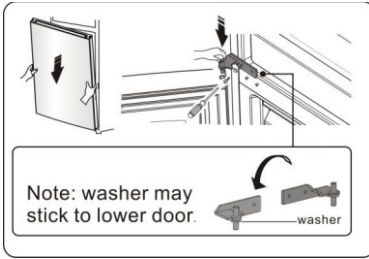
12. Remove part ⑤ from the lower hinge pin, loose out the lower hinge pin, change it to the reverse hole site, and then tighten into position, then install part ⑤ on the lower hinge pin.

13. Remove part ③ from the part ②, then remove screws ④.

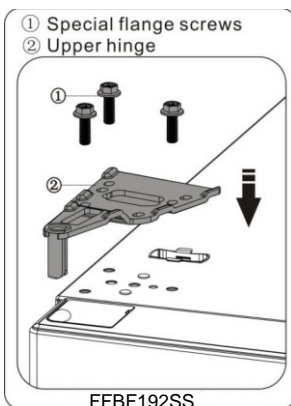
14. Replace the items remount in step 11, change part ① to left and part ② to right and then fix them with screws ④. Finally install part ③.



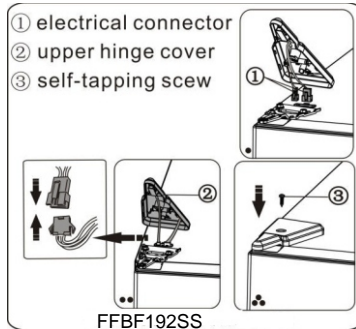
15. Slot the lower door onto the bottom hinge pin and hold in position. Turn the middle hinge by 180°, change the washer on the axis to the lower side, adjust the middle hinge to the appropriate position and then install it ensuring the lower door in secured in place.



16. Move the upper door to an appropriate position, and then fix part② by screws①. Before fix part②, pass connector③ through hinge② refer to step 3. (Please hold upper door by hand when installing)



17. Connect electrical connector① as shown in the picture, then fix part② by screw③ refer to step 2.

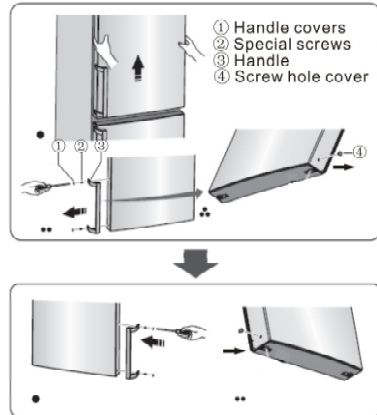


18. Open the upper door, mount door racks and then close it.

Note:

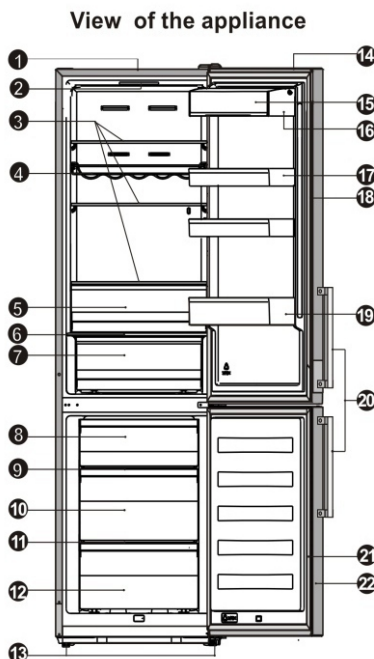
If your appliance has handle, you have to reverse handle by follow instructions below.

Remove the upper door and place it on a smooth surface with its panel upwards. Lever part① and part④, then loose screws②, as shown in the picture. Change handle③ to the right side, then install screws②, part① and part④ in turn.



Description of the appliance

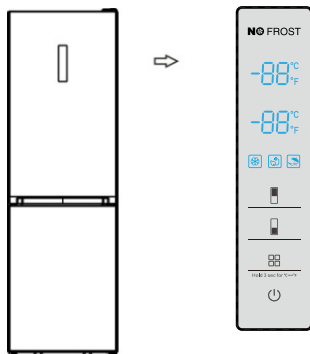
1. Cabinet
2. LED light and Display panel
3. Glass shelf
4. Flexible wine rack(Optional)
5. 0°C Cooling Plus(Chill compartment)
6. Crisper cover
7. Fruit and vegetables crisper
8. Upper freezer drawer
9. Upper freezer glass shelf
10. Middle freezer drawer
11. Middle freezer glass shelf
12. Lower freezer drawer
13. Adjustable bottom feet
14. Fridge door
15. Upper rack cover
16. Upper rack
17. Middle rack
18. Fridge door seal
19. Lower rack
20. Handle (Optional)
21. Freezer door seal
22. Freezer door




Display controls

Display panel on door

Use your appliance according to the following control regulations, your appliance has the corresponding functions and modes as the display panels showed in the pictures below. When the appliance is powered on for the first time, the backlighting of the icons on display panel starts working. If no buttons have been pressed and the doors are closed, the backlighting will turn off



The temperature can be changed between °C and °F, by pressing the  button for 3 sec.

Controlling the temperature

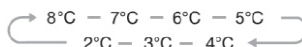
We recommend that when you start your refrigerator for the first time, the temperature for the refrigerator is set to 5°C and the freezer to -18°C. If you want to change the temperature, follow the instructions below.

Caution! When you set a temperature, you set an average temperature for the whole refrigerator cabinet. Temperatures inside each compartment may vary from the temperature values displayed on the panel, depending on how much food you store and where you place them. Ambient temperature may also affect the actual temperature inside the appliance.

1. Fridge()

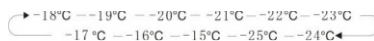
Press "Fridge" to set fridge temperature between 2°C and 8°C as needed, and

display panel will display corresponding values according to the following sequence.



2. Freezer()

Press "Freezer" to set freezer temperature between -15°C and -25°C as needed, and the display panel will display corresponding value according to the following sequence.



3. Mode()

You can select three different modes according to your requirements by pressing the button "Mode" on the display panel, and the corresponding icon will be illuminated.

Super Freeze.()

Super Freeze will quickly lower the temperature within the freezer so food will freeze faster. This can lock in the vitamins and nutrients of fresh food and keep food fresh longer.

- When Super freeze Mode is selected, the light will be illuminated and the freezer temperature will be set at -25°C.
- In case of the maximum amount of food to be frozen, please wait about 24 h.

•Super freeze automatically switches off after 52 hours and then the freezer temperature setting will revert back to the previous setting.

Eco energy. ()

This function makes the freezer work in a power saving mode which is useful for reducing energy consumption when you are away.

•When Eco energy Mode is activated, the light will be illuminated. The freezer temperature will be set at -17°C and the fridge temperature will be set at 6°C.

Holiday ()

If you are going to be away for a long period of time, you can activate this function.

•When Holiday Mode is activated, the light will be illuminated. The freezer temperature will be set at -18°C and the fridge temperature will be set at 15°C.

Important! Do not store any food in the fridge during this time.

4.Switch()

You can switch on or switch off your appliance by pressing this button.

- Press "Switch" for 3 seconds, after a buzzer sound, the appliance will be turned off.
- Press "Switch" for 1 second, after a buzzer sound, the appliance will be turned on.

5. Alarm

•When the door of fridge or freezer has been opened for over 2 minutes, the door alarm will sound. In case of door alarm, buzzer will sound 3 times every 1 minute and will stop alarming automatically after 8 minutes.

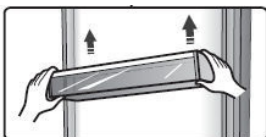
•To save energy, please avoid keeping the door open for a long time when using the appliance. The door alarm can also be cleared by closing the door.

Using your appliance

Your appliance is supplied with a number of accessories and this section describes how best to use them.

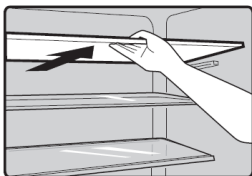
Door rack

- It is suitable for the storage of eggs, canned liquid, bottled drinks and packed food, etc. Do not place too many heavy things in the racks.



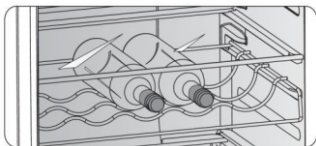
Shelf in Refrigerator chamber

- There are three shelves in refrigerator chamber, and they can be taken out to be cleaned.



Flexible wine rack Optional

- It is for storing bottled wine or drinks, and it can be taken out to clean.



0°C Cooling Plus(Chill compartment)

- It is used to store fish, meat and other perishable food.

Note: Due to the environment temperature and setting temperature both influence the temperature of 0°C Cooling Plus(Chill compartment), the actual temperature of 0°C Cooling Plus(Chill compartment) may change in a certain range.

The temperature of this drawer may lower below zero, so it is normal that liquid in this drawer was frozen.

Crisper cover

- It is for controlling the temperature of the crisper and keeping vegetables from losing moisture.

Fruit and vegetable crisper

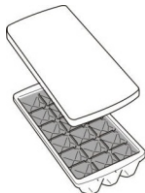
- It is suitable for the storage of fruits and vegetable.

Freezer Drawer

- It is used to store food which needs to be frozen, including meat, fish, ice cream, etc.

Integrative ice maker

- It is used for making ice and storing ice cubes.
- It is a removable accessory which can be taken out to save space. There is an ice maker cover to keep the ice maker clean.



Note: If the ice maker is used for the first time or has not been used for a long time, please clean it before using.

- Ice-making process.
 1. Place the integrative ice maker on level and take down the cover.
 2. Pour water into the ice trays and the water level shall not exceed the top line .
 3. Place the ice maker in its original position. When ice cubes form, you can take out the ice cubes for direct use or drop off the ice cubes into a box for future use.

Helpful hints and tips

Energy saving tips

We recommend that you follow the tips below to save energy.

- Try to avoid keeping the door open for

long periods in order to conserve energy.

- Ensure the appliance is away from any sources of heat (Direct sunlight, electric oven or cooker etc)

- Don't set the temperature colder than necessary.
- Don't store warm food or evaporating liquid in the appliance.
- Place the appliance in a well ventilated, humidity free, room. Please refer to Installing your new appliance chapter.
- If the diagram shows the correct combination for the drawers, crisper and shelves, do not adjust the combination as this is designed to be the most energy efficient configuration.

Hints for fresh food refrigeration

- Do not place hot food directly into the refrigerator or freezer, the internal temperature will increase resulting in the compressor having to work harder and will consume more energy.
- Do cover or wrap the food, particularly if it has a strong flavor.
- Place food properly so that air can circulate freely around it.

Hints for refrigeration

- Meat (All Types) Wrap in plastic food wrap and place on the glass shelf above the vegetable drawer. Always follow food storage times and use by dates suggested by manufacturers.
- Cooked food, cold dishes, etc.:
They should be covered and may be placed on any shelf.
- Fruit and vegetables:
They should be stored in the special drawer provided.
- Butter and cheese:
Should be wrapped in airtight foil or plastic film wrap.
- Milk bottles:
Should have a lid and be stored in the door racks.

Hints for freezing

- When first starting-up or after a period out of use, let the appliance run at least 2 hours on the higher settings before putting food in the compartment.
- Prepare food in small portions to enable it to be rapidly and completely frozen and to make it possible to subsequently thaw only the quantity required.
- Wrap up the food in aluminum foil or polyethylene food wraps which are airtight.
- Do not allow fresh, unfrozen food to touch the food which is already frozen to avoid temperature rise of the latter.
- Iced products, if consumed immediately after removal from the freezer compartment, will probably cause frost burns to the skin.
- It is recommended to label and date each frozen package in order to keep track of the storage time.

Hints for the storage of frozen food

- Ensure that frozen food has been stored correctly by the food retailer.
- Once defrosted, food will deteriorate rapidly and should not be re-frozen. Do not exceed the storage period indicated by the food manufacturer.

Switching off your appliance

If the appliance needs to be switched off for an extended period, the following steps should be taken prevent mold on the appliance.

1. Remove all food.
2. Remove the power plug from the mains socket.
3. Clean and dry the interior thoroughly.
4. Ensure that all the doors are wedged open slightly to allow air to circulate.

Cleaning and care

For hygienic reasons the appliance (including exterior and interior accessories) should be cleaned regularly at least every two months.

Caution! The appliance must not be connected to the mains during cleaning. Danger of electrical shock! Before cleaning switch the appliance off and remove the plug from the mains socket.

Exterior cleaning

To maintain good appearance of your appliance, you should clean it regularly.

-Wipe the digital panel and display panel with a clean, soft cloth.

-Spray water onto the cleaning cloth instead of spraying directly on the surface of the appliance. This helps ensure an even distribution of moisture to the surface.

-Clean the doors, handles and cabinet surfaces with a mild detergent and then wipe dry with a soft cloth.

Caution!

-Don't use sharp objects as they are likely to scratch the surface.

-Don't use Thinner, Car detergent, Clorox, ethereal oil, abrasive cleansers or organic solvent such as Benzene for cleaning. They may damage the surface of the appliance and may cause fire.

Interior cleaning

- You should clean the appliance interior regularly. It will be easier to clean when food stocks are low. Wipe the inside of the fridge freezer with a weak solution of bicarbonate of soda, and then rinse with warm water using a wrung-out sponge or cloth. Wipe completely dry before replacing the shelves and baskets. Thoroughly dry all surfaces and removable parts.

- Although this appliance automatically

defrosts, a layer of frost may occur on the freezer compartment's interior walls if the freezer door is opened frequently or kept open too long. If the frost is too thick, choose a time when the supply of food stocks are low and proceed as follows:

1. Remove existing food and accessories baskets, unplug the appliance from the mains power and leave the doors open. Ventilate the room thoroughly to accelerate the thawing process.

2. When defrosting is completed, clean your freezer as described above.

Caution! Don't use sharp objects to remove frost from the freezer compartment. Only after the interior is completely dry should the appliance be switched back on and plugged back into the mains socket.

Door seals cleaning

Take care to keep door seals clean. Sticky food and drinks can cause seals to stick to the cabinet and tear when you open the door. Wash seal with a mild detergent and warm water. Rinse and dry it thoroughly after cleaning.

Caution! Only after the door seals are completely dry should the appliance be powered on.

Replacing the LED light:

Warning: The LED light must not be replaced by the user! If the LED light is damaged, contact the customer helpline for assistance. To replace the LED light, the below steps can be followed:

1. Unplug your appliance.
2. Remove light cover by pushing up and out.
3. Hold the LED cover with one hand and pull it with the other hand while pressing the connector latch.

4. Replace LED light and snap it correctly | in place.

Troubleshooting

If you experience a problem with your appliance or are concerned that the appliance is not functioning correctly, you can carry out some easy checks before calling for service, please see below.

Warning! Don't try to repair the appliance yourself. If the problem persists after you have made the checks mentioned below, contact a qualified electrician, authorized service engineer or the shop where you purchased the product.

Problem	Possible cause & Solution
Appliance is not working correctly	Check whether the power cord is plugged into the power outlet properly.
	Check the fuse or circuit of your power supply, replace if necessary.
	The ambient temperature is too low. Try setting the chamber temperature to a colder level to solve this problem.
	It is normal that the freezer is not operating during the automatic defrost cycle, or for a short time after the appliance is switched on to protect the compressor.
Odors from the compartments	The interior may need to be cleaned
	Some food, containers or wrapping cause odors.
Noise from the appliance	<p>The sounds below are quite normal:</p> <ul style="list-style-type: none"> •Compressor running noises. •Air movement noise from the small fan motor in the freezer compartment or other compartments. •Gurgling sound similar to water boiling. •Popping noise during automatic defrosting. •Clicking noise before the compressor starts.
	<p>Other unusual noises are due to the reasons below and may need you to check and take action:</p> <p>The cabinet is not level.</p> <p>The back of appliance touches the wall.</p> <p>Bottles or containers fallen or rolling.</p>
The motor runs continuously	<p>It is normal to frequently hear the sound of the motor, it will need to run more when in following circumstances:</p> <ul style="list-style-type: none"> • Temperature setting is set colder than necessary • Large quantity of warm food has recently been stored within the appliance. •The temperature outside the appliance is too high. •Doors are kept open too long or too often. •After your installing the appliance or it has been switched off for a long time.
A layer of frost occurs in the compartment	Check that the air outlets are not blocked by food and ensure food is placed within the appliance to allow sufficient ventilation. Ensure that door is fully closed. To remove the frost, please refer to cleaning and care chapter.

Temperature inside is too warm	You may have left the doors open too long or too frequently; or the doors are kept open by some obstacle; or the appliance is located with insufficient clearance at the sides, back and top
Temperature inside is too cold	Increase the temperature by following the “Display controls” chapter.
Doors can't be closed easily	Check whether the top of the refrigerator is tilted back by 10-15mm to allow the doors to self close, or if something inside is preventing the doors from closing.
Water drips on the floor	The water pan (located at the rear bottom of the cabinet) may not be properly leveled, or the draining spout (located underneath the top of the compressor depot) may not be properly positioned to direct water into this pan, or the water spout is blocked. You may need to pull the refrigerator away from the wall to check the pan and spout.
The light is not working	<ul style="list-style-type: none"> •The LED light may be damaged. Refer to replace LED lights in cleaning and care chapter. •The control system has disabled the lights due to the door being kept open too long, close and reopen the door to reactivate the lights.

Disposal of the appliance

It is prohibited to dispose of this appliance as household waste.

Packaging materials

Packaging materials with the recycle symbol are recyclable. Dispose of the packaging into a suitable waste collection container to recycle it.

Before disposal of the appliance

1. Pull out the mains plug from the mains socket.
2. Cut off the power cord and discard with the mains plug.

Warning! Refrigerators contain refrigerant and gases in the insulation.

Refrigerant and gases must be disposed of professionally as they may cause eye injuries or ignition. Ensure that tubing of the refrigerant circuit is not damaged, prior to proper disposal.

Limited Warranty

ONE YEAR LIMITED WARRANTY FOR APPLIANCE

Within the 48 contiguous United States, for one year from the date of purchase, when this appliance is operated and maintained according to instructions attached to or furnished with the product, warrantor will pay for factory-specified parts and repair labor to correct defects in materials or workmanship. Service must be provided by a designated service company. Outside the 48 states, all parts are warranted for one year from manufacturing defects. Plastic parts, shelves and cabinets are warranted to be manufactured to commercially acceptable standards, and are not covered from damage during handling or breakage.

5-YEAR COMPRESSOR WARRANTY

1. The compressor is covered for 5 years.
2. Replacement does not include labor.

ITEMS WARRANTOR WILL NOT PAY FOR:

1. Service calls to correct the installation of your appliance, to instruct you how to use your appliance, to replace or repair fuses or to correct wiring or plumbing.
2. Service calls to repair or replace appliance light bulbs or broken glass shelves. Consumable parts (such as filters) are excluded from warranty coverage.
3. Damage resulting from accident, alteration, misuse, abuse, fire, flood, acts of God, improper installation, installation not in accordance with electrical or plumbing codes, or use of products not approved by warrantor.
4. Replacement parts or repair labor costs for units operated outside the United States.
5. Repairs to parts or systems resulting from unauthorized modifications made to the appliance.
6. The removal and reinstallation of your appliance if it is installed in an inaccessible location or is not installed in accordance with published installation instructions.

DISCLAIMER OF IMPLIED WARRANTIES – LIMITATION OF REMEDIES

CUSTOMER'S SOLE AND EXCLUSIVE REMEDY UNDER THIS LIMITED WARRANTY SHALL BE PRODUCT REPAIR AS PROVIDED HEREIN. IMPLIED WARRANTIES, INCLUDING WARRANTIES OF MERCHANTABILITY OR FITNESS FOR A PARTICULAR PURPOSE, ARE LIMITED TO ONE YEAR. WARRANTOR SHALL NOT BE LIABLE FOR INCIDENTAL OR CONSEQUENTIAL DAMAGES. SOME STATES DO NOT ALLOW THE EXCLUSION OR LIMITATION OF INCIDENTAL OR CONSEQUENTIAL DAMAGES, OR LIMITATIONS ON THE DURATION OF IMPLIED WARRANTIES OF MERCHANTABILITY OR FITNESS, SO THESE EXCLUSIONS OR LIMITATIONS MAY NOT APPLY TO YOU. THIS WARRANTY GIVES YOU SPECIFIC LEGAL RIGHTS AND YOU MAY ALSO HAVE OTHER RIGHTS, WHICH VARY FROM STATE TO STATE .



WARNING: This product can expose you to chemicals including Nickel (Metallic) which is known to the State of California to cause cancer.

For more information go to www.P65Warnings.ca.gov

Note: Nickel is a component in all stainless steel and some other metal components.

FELIX STORCH, INC.
770 Garrison Avenue
Bronx, New York 10474
Phone: (718) 893-3900
Fax: (844) 478-8799
www.summitappliance.com

SUMMIT

For parts and accessory ordering,
troubleshooting and helpful hints,
visit: www.summitappliance.com/support